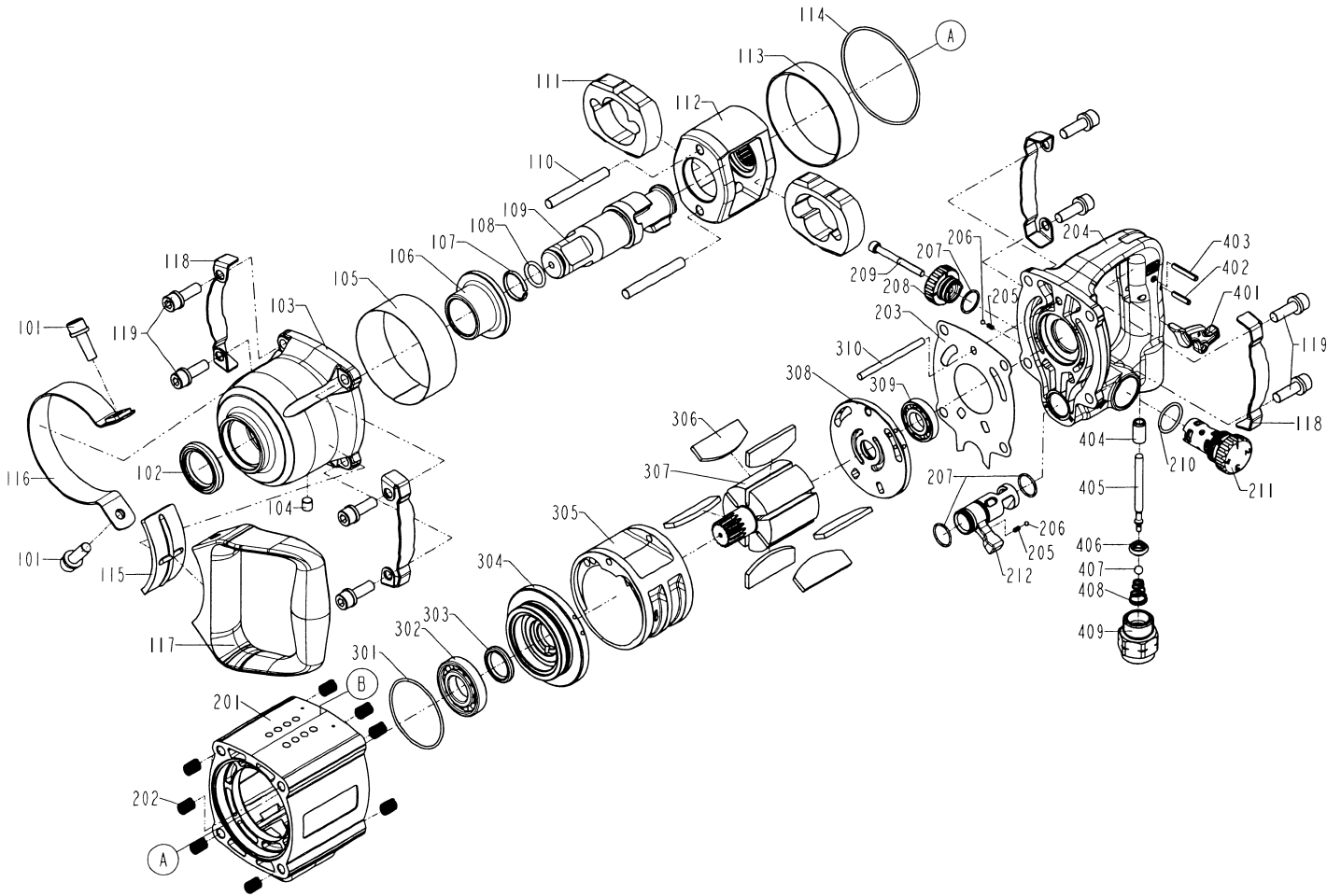


DIAGRAM OF UIW270



ITEM NO.	PART NO.	DESCRIPTION	ITEM NO.	PART NO.	DESCRIPTION	ITEM NO.	PART NO.	DESCRIPTION
101	2040100-05020-0	BOLT ASSY	303	2042300-04040-0	OIL SEAL			
102	2042300-01020-0	OIL SEAL	304	12312-0090002-1	MAGAZINE			
103	12318-0094703-1	HAMMER CASE	305	12315-0090002-2	CYLINDER			
104	2040104-05020-1	HEX.SOC.HD.SCREW	306	12314-0090002-1	BLADES			
105	1231V-0090001-1	STEEL RING	307	12313-0090002-1	ROTOR			
106	1230K-0080002-1	HAMMER CASE BUSHING	308	12316-0090002-1	REAR END PLATE			
107	2040306-00040-0	SOCKET RETAINER	309	2041200-00160-0	BEARING			
108	2041104-02010-0	O - RING	310	1230B-0090004-1	PIN			
109	1230D-0090006-1	ANVIL	401	12310-0094702-1	TRIGGER			
110	1230B-0080001-2	HAMMER FRAME PIN	402	2040402-07090-0	SPIRAL PINS			
111	1230C-0080001-2	HAMMER	403	2040402-07140-0	SPIRAL PINS			
112	1230E-0080002-1	HAMMER FRAME	404	1230K-0090002-1	BUSHING			
113	12378-0084701-1	COLLAR	405	1230B-0090005-1	PIN			
114	2041109-09010-0	O - RING	406	12319-0094701-1	SEAL			
115	1230S-0090002-1	WASHER	407	2040800-03020-0	BALL			
116	1231R-0094702-1	FIXED RING	408	12308-0090002-1	SPRING			
117	1231N-0094707-1	HANDLE	409	12309-0094703-1	AIR INLET			
118	1232P-0094701-1	PROTECTOR						
119	2040100-05020-2	BOLT ASSY						
201	12302-0096615-2	HOUSING						
202	2041000-05011-0	THREAD INSERT						
203	1230S-0090003-2	HOUSING GASKET						
204	12223-0094701-1	REAR COVER UNIT						
205	1230J-0070002-1	SPRING						
206	2040800-01010-0	STEEL BALL						
207	2041109-02060-0	O - RING						
208	12304-0094702-1	REGULATOR-B						
209	2040101-03190-2	HEX.SOC.HD.BOLT						
210	2041109-03090-0	O - RING						
211	12304-0094701-1	REGULATOR-A						
212	1230L-0094702-1	REVERSE VALVE						
301	2041105-06010-0	O - RING						
302	2041200-00150-0	BEARING						