

# SBL 06, SBL 06 PE PUN

---

## Spare Parts List Pneumatic Scabbler

SBL 06, SBL 06 PE PUN s/n PUN000001-



## General information

This spare parts list applies to the following:

Part number	Description
8461025011	SBL 06
8461025012	SBL 06 PE

Use only authorized parts. Any damage or malfunction caused by the use of unauthorized parts is not covered by Warranty or Product Liability. Any unauthorized use or copying of the contents or any part thereof is prohibited. This applies in particular to trademarks, model denominations, part numbers, and drawings.

### Instructions for use

This spare parts list contains no safety regulations and is merely intended to assist in the ordering of spare parts.

For information about operating, servicing, or repairing, the relevant Safety and operating instructions must be consulted at all costs.

Please observe the safety instructions listed in the relevant Safety and operating instructions!

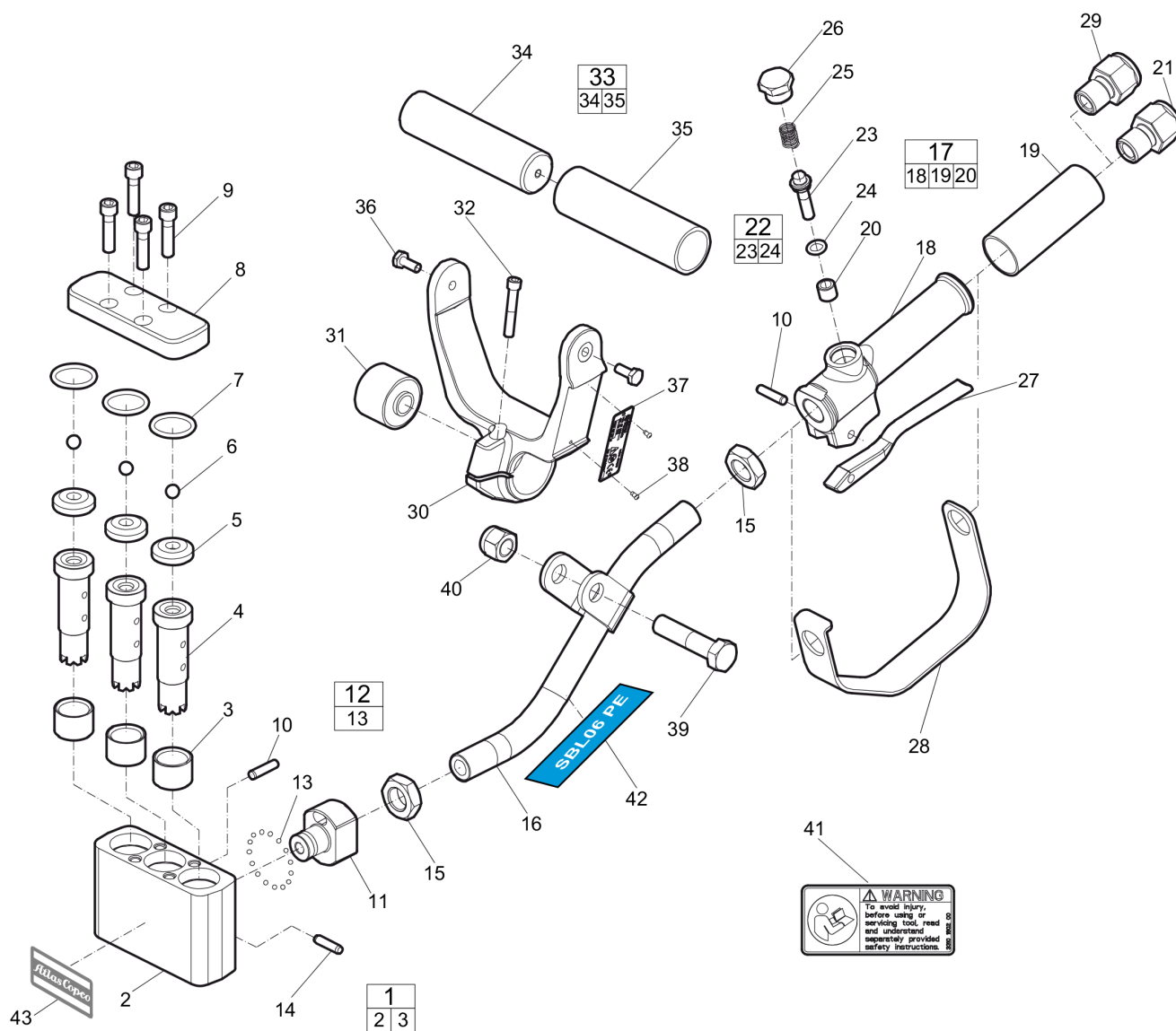
**Spare parts list**

SBL 06 PE	1
SBL 06	5

**Accessories**

Pre-mounted rubber hose with couplings	7
Water separator	9
Lubricator	11
Breaker and hammer AIR-OIL	13
Claw couplings	15
Whip Check	17



**Spare parts list** SBL 06 PE

Refer to Parts Online for the most up to date information. The printed information might be outdated.

Wed Jun 09 06:34:50 UTC 2021

Item	Part No.	Name	Qty	L
1	3310102458	Cylinder, complete	1	
2	--	Cylinder	1	
3	F826808	Cylinder bushing	3	
4	F064604	Piston	3	
5	F826706	Cylinder cap	3	
6	F061776	Ball valve	3	
7	A082759	O-ring	3	
8	3310102459	Cylinder cover	1	
9	F826516	Cap screw	4	A
10	P001921	Pin - lever	2	
11	3310102460	Adaptor bolt	1	
12	3303005242	Bearing ball, complete	1	B
13	--	Bearing ball, 1/8 in.	15	
14	3121059500	Pin	1	
15	F064909	Locknut	2	
16	3310102461	Handle - Bent pipe	1	
17	3310102464	Throttle body complete		
18	-	Throttle	1	
19	3303005201	Throttle handle grip	1	
20	P001814	Throttle valve bushing	1	
21	3303005204	Air inlet nipple, 1/2 in. BSP	1	
22	3303005244	Body valve, complete	1	
23	--	Body valve	1	
24	P088844	O-ring	1	
25	P001858	Compression ring	1	
26	P001964	Cap valve screw	1	
27	3303005202	Throttle valve lever	1	
28	3310102463	Handle bow	1	
29	3303005220	Strainer - Air	1	
30	3310102462	Front handle	1	
31	3303005196	Bushing	1	
32	0211520900	Screw, 1/4 in.	1	
33	3303005243	Handle bar, complete	1	
34	--	Handle bar	1	
35	3303005200	Front handle grip	1	

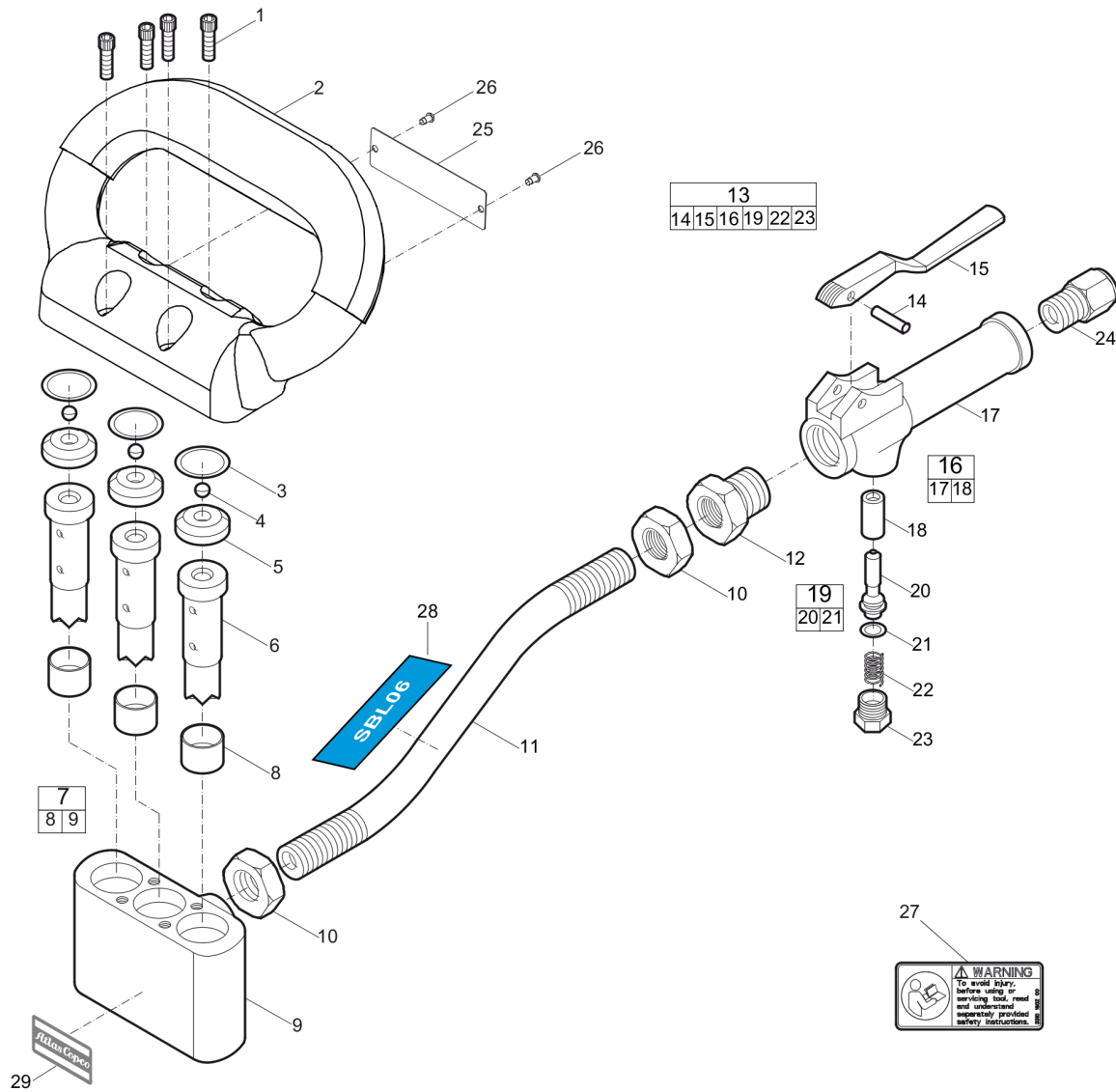
Refer to Parts Online for the most up to date information. The printed information might be outdated.

Wed Jun 09 06:34:50 UTC 2021

This page intentionally left blank

Item	Part No.	Name	Qty	L
36	0144320500	Hexagon screw, 1/4 in.	2	
37	-	Data plate (Not available separately)	1	
38	0244414400	Drive screw	2	
39	0147144403	Hexagon head screw	1	
40	0291112841	Locknut	1	
41	3310160200	Safety Label	1	
42	3310102896	Product decal	1	
43	3310102902	Ac logo	1	



**Spare parts list SBL 06**

Refer to Parts Online for the most up to date information. The printed information might be outdated.

Wed Jun 09 06:34:51 UTC 2021

Item	Part No.	Name	Qty	L
1	F826516	Cap screw	4	A
2	3310102466	Handle - Cylinder	1	
3	A082759	O-ring	3	
4	F061776	Ball valve	3	
5	F826706	Cylinder cap	3	
6	F064604	Piston	3	
7	3310102465	Cylinder, complete	1	
8	F826808	Cylinder bushing	3	
9	--	Cylinder	1	
10	F064909	Locknut	2	
11	F064668	Handle - Bent	1	
12	F826506	Bushing - Reducer	1	
13	3310102467	Throttle body, complete	1	
14	P001921	Pin - lever	1	
15	P001903	Lever - Valve	1	
16	3310102468	Body - Throttle valve, complete	1	
17	---	Body - Throttle	1	
18	P001814	Throttle valve bushing	1	
19	P087671	Valve - Throttle, complete	1	
20	---	Throttle valve	1	
21	CA088867	O-ring	1	
22	P001858	Compression ring	1	
23	P001964	Cap valve screw	1	
24	P001995	Bushing-airinlet	1	
25	-	Data plate (Not available separately)	1	
26	0244414400	Drive screw	2	
27	3310160200	Safety Label	1	
28	3310102895	Product decal	1	
29	3310102902	Ac logo	1	

Refer to Parts Online for the most up to date information. The printed information might be outdated.

Wed Jun 09 06:34:51 UTC 2021

**Accessories** Pre-mounted rubber hose with couplings

NO EXPLODED VIEW  
AVAILABLE  
FOR THIS BOM

Item	Part No.	Name	Qty	L
-	9030204400	TEX 09, 10, 11, 12	1	

---

**Accessories** Water separator

NO EXPLODED VIEW  
AVAILABLE  
FOR THIS BOM

Item	Part No.	Name	Qty	L
-	8092011058	VAM 01	1	A
-	8092011059	VAM 01	1	B
-	8092011082	VAM 5A	1	C
-	8092011083	VAM 5A	1	D

Comments for Page: Water separator

(L)OCAL REMARKS

A | Airflow < 50 l/s

Airflow < 106 ft³/min

B | Airflow < 50 l/s

Airflow < 106 ft³/min

C | Airflow < 120 l/s

Airflow < 254 ft³/min

D | Airflow < 120 l/s

Airflow < 254 ft³/min

---

**Accessories** Lubricator

NO EXPLODED VIEW  
AVAILABLE  
FOR THIS BOM

Item	Part No.	Name	Qty	L
-	8202510239	CLG 30,for both mineral and synthetic oil	1	A
-	8202510240	CLG 30,for both mineral and synthetic oil	1	A

Comments for Page: Lubricator

(L)OCAL REMARKS

A | For mineral and synthetic oil



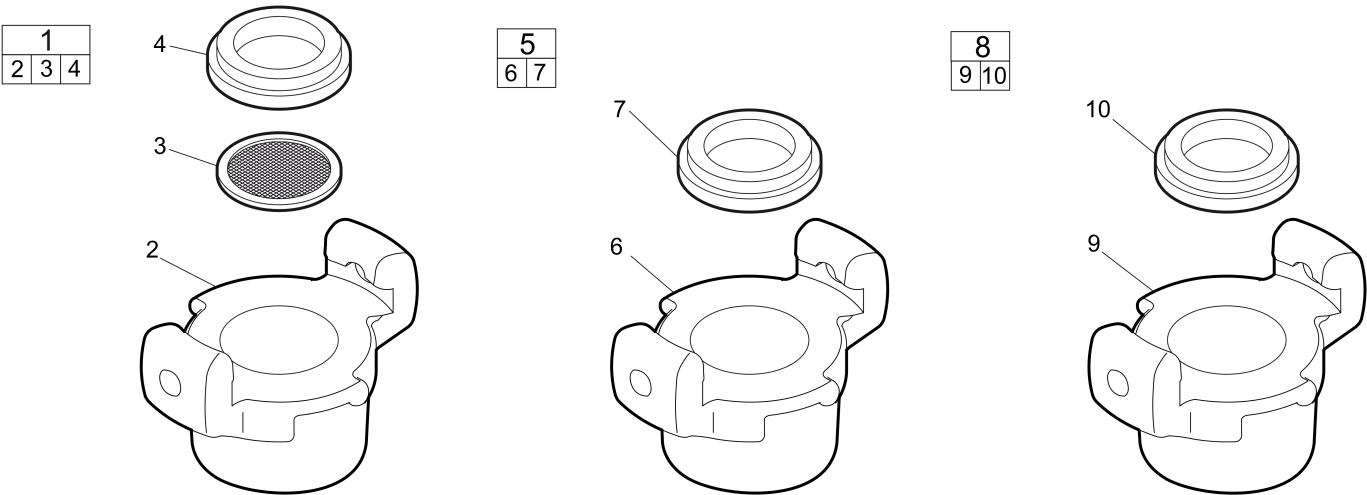
---

**Accessories** Breaker and hammer AIR-OIL

NO EXPLODED VIEW  
AVAILABLE  
FOR THIS BOM

Item	Part No.	Name	Qty	L
1	8099020240	Breaker and hammer AIR-OIL,0.25 l, 0.06 US gallon	1	
2	8099020236	Breaker and hammer air-oil 1l	1	
3	8099020281	Breaker and hammer AIR-OIL (pack), 1 l , 0.26 US gallon	20	
4	8099020202	Breaker and hammer air-oil 5l	1	
5	8099020285	Breaker and hammer AIR-OIL (pack), 5 l, 1.32 US gallon	4	

**Accessories** Claw couplings



Item	Part No.	Name	Qty	L
1	9000030601	Internal thread,with strainer	1	
2	-	Claw coupling, Standard G3/4 in.	1	
3	9000000010	Strainer	1	
4	9000000000	Packing	1	
5	9000030600	Internal thread	1	
6	-	Claw coupling, Standard G3/4 in.	1	
7	9000000000	Packing	1	
8	9001000506	Internal thread	1	
9	-	Claw coupling, US-universal 3/4 in.	1	
10	9001000515	Packing	1	

**Accessories** Whip Check



Item	Part No.	Name	Qty	L
-	3310101858	Whip Check 1/2"-1.1/4",L=540mm,BS=588kg	1	
-	3310101859	Whip Check 1.1/2"-3",L=965mm,BS=2350kg	1	
-	3310101860	Whip Check 3"-6",L=1150mm,BS=2350kg	1	

Any unauthorized use or copying of the contents or any part thereof is prohibited.  
This applies in particular to trademarks, model denominations, part numbers, and  
drawings.

