

# LH 11 PUN

---

## Spare Parts List Handheld Hydraulic Breakers

LH 11 PUN s/n PUN000001 -



## General information

This spare parts list applies to the following:

Part number	Description
1801174118	LH 11

Use only authorized parts. Any damage or malfunction caused by the use of unauthorized parts is not covered by Warranty or Product Liability.  
Any unauthorized use or copying of the contents or any part thereof is prohibited. This applies in particular to trademarks, model denominations, part numbers, and drawings.

### Instructions for use

This spare parts list contains no safety regulations and is merely intended to assist in the ordering of spare parts.

For information about operating, servicing, or repairing, the relevant Safety and operating instructions must be consulted at all costs.

Please observe the safety instructions listed in the relevant Safety and operating instructions!

Kits/Consumables LH 11	1
------------------------	---

## Working tools

### Breaker and Hammer Steel

Working tools 22 x 82.5 mm (Hex. 7/8 x 3 1/4 in) Flat to Flat (US)	3
Working tools 22 x 82.5 mm (Hex. 7/8 x 3 1/4 in) point to flat (ISO)	7

## Spare parts list

LH 11	11
D-handle	16

## Tightening torque

Tightening torque	19
-------------------	----

## Accessories

### Hydraulic Accessories

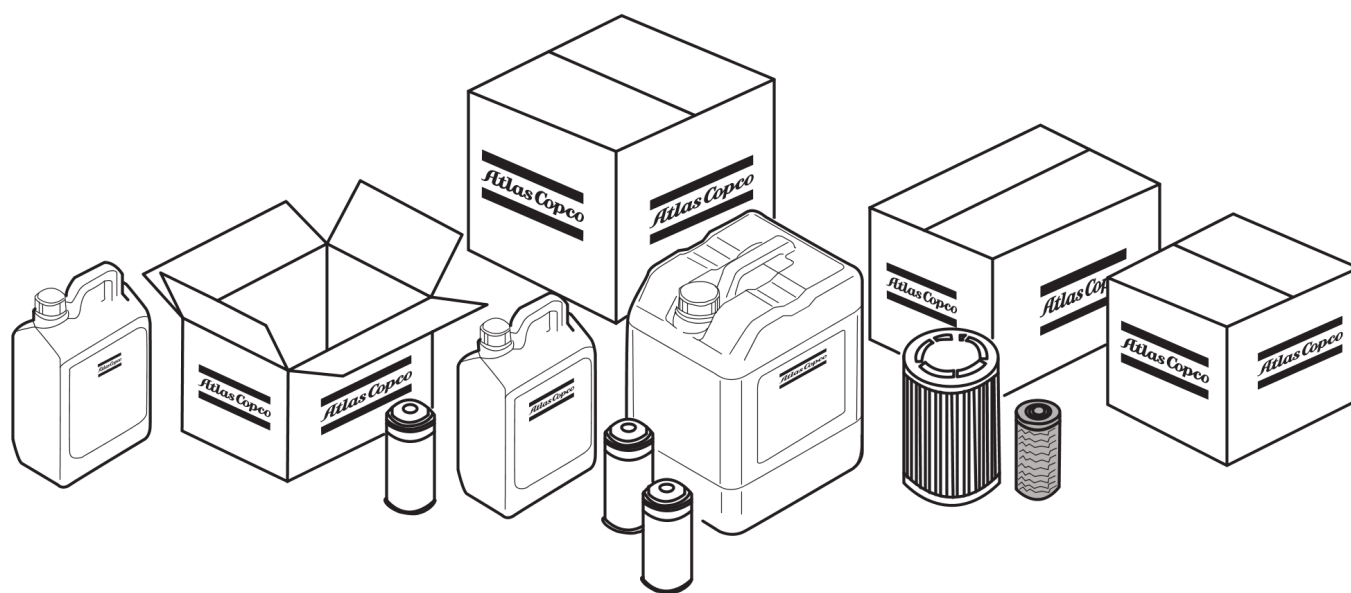
Hydraulic hoses	21
Hydraulic quick-release couplings	25
Whip Check	29

## Kits

Label kit	31
Seal kit	33
Trigger valve kit	35
Accumulator kit	37
3310101845_Accumulator repair kit	39



## Kits/Consumables LH 11

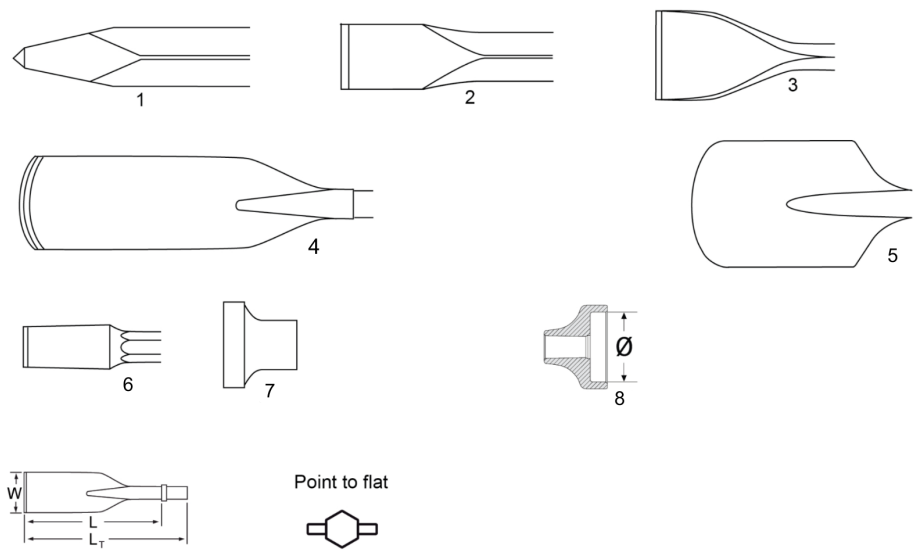


Refer to Parts Online for the most up to date information. The printed information might be outdated.

Fri Feb 04 04:33:13 UTC 2022

Item	Part No.	Name	Qty	L
1	3371821094	Label kit	1	
2	3371814057	Seal kit	1	
3	3371814058	Trigger valve kit	1	
4	3371814068	Accumulator kit	1	
5	-	ISO standard hexagon 22 x 82.5 mm	1	

**Breaker and Hammer Steel** Working tools 22 x 82.5 mm (Hex. 7/8 x 3 1/4 in) Flat to Flat (US)



For tech. details check next page

This page intentionally left blank



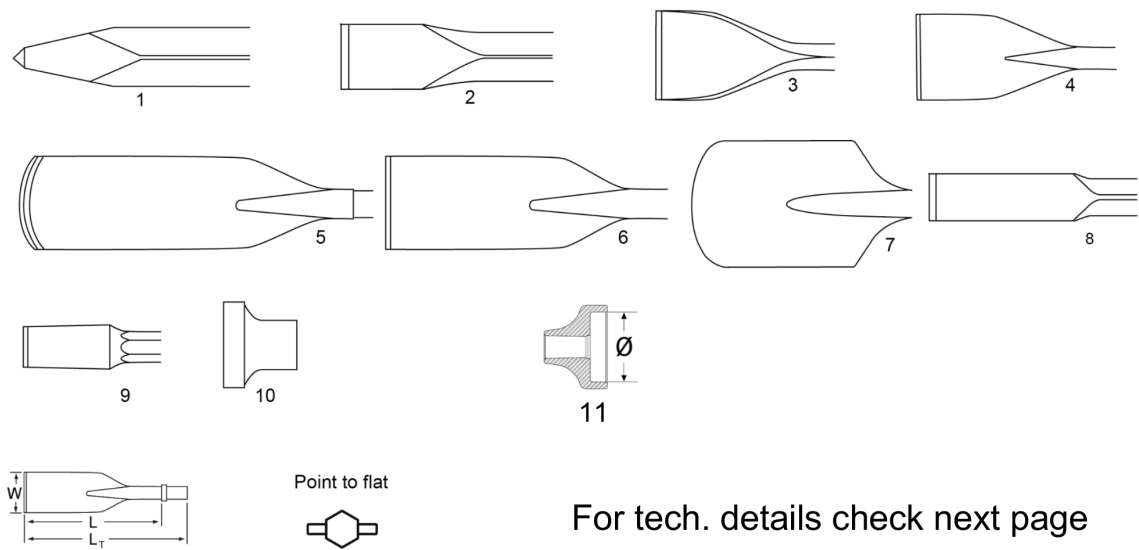
Description	Working length		Total length		Blade / Tip width		Weight	Part number
	mm	in	mm	in	mm	in	kg <sup>1)</sup>	
Moil point	355	14	450	18	-	-	1.5	1 3083 4050 00
	450	18	545	21	-	-	1.8	1 3083 4050 10
	610	24	705	28	-	-	2.3	1 3083 4050 20
Narrow chisel	355	14	450	18	-	-	1.5	2 3083 3303 00
	450	18	545	21	-	-	1.8	2 3083 4051 10
	610	24	705	28	-	-	2.3	2 3083 3304 00
Wide chisel	355	14	450	18	75	3	1.8	3 3083 3305 00
Digging chisel	355	14	450	18	75	3	3.2	4 3083 3306 00
Clay spade	430	17	525	21	125	5	3.6	5 3083 3308 00
Shaft for pad	205	8	300	12	-	-	1.1	6 3083 4058 00
Tamping pad	-	-	-	-	Ø175	Ø 7	7.5	7 3083 3252 10
	-	-	-	-	□175	□7	6	7 3083 3239 01
Driver pad	-	-	-	-	Ø 65	Ø2 ½	2.5	8 3371 8060 39
	-	-	-	-	Ø100	Ø 4	2.5	8 9245 2817 90

Refer to Parts Online for the most up to date information. The printed information might be outdated.

Fri Feb 04 04:33:14 UTC 2022

Item	Part No.	Name	Qty	L
1	3083405000	Moil Point H22 X 82.5 Mm (7/8"X3 1/4")	1	
1	3083405010	Moil Point H22 X 82.5 Mm (7/8"X3 1/4")	1	
1	3083405020	Moil Point H22 X 82.5 Mm (7/8"X3 1/4")	1	
2	3083330300	Narrow Chisel H22X82.5 Mm (7/8"X3 1/4")	1	
2	3083405110	Narrow Chisel H22X82.5 Mm (7/8"X3 1/4")	1	
2	3083330400	Narrow Chisel H22X82.5 Mm (7/8"X3 1/4")	1	
3	3083330500	Wide Chisel H22X82.5 Mm (7/8"X3 1/4")	1	
4	3083330600	Digging Chisel H22 X 82.5Mm(7/8"X3 1/4")	1	
5	3083330800	Clay Spade H22 X 82.5 Mm (7/8"X3 1/4")	1	
6	3083405800	Shaft H22 X 82.5 Mm (7/8"X31/4")	1	
7	3083325210	Tamping Pad, Round 175 Mm For Hex 22/25	1	
7	3083323901	Square Tamping Pad 175Mm	1	
8	3371806039	65Mm Driving Pad	1	
8	9245281790	Driver Pad Ø 100 Mm For Hex 22/25	1	

**Breaker and Hammer Steel** Working tools 22 x 82.5 mm (Hex. 7/8 x 3 1/4 in) point to flat (ISO)



This page intentionally left blank

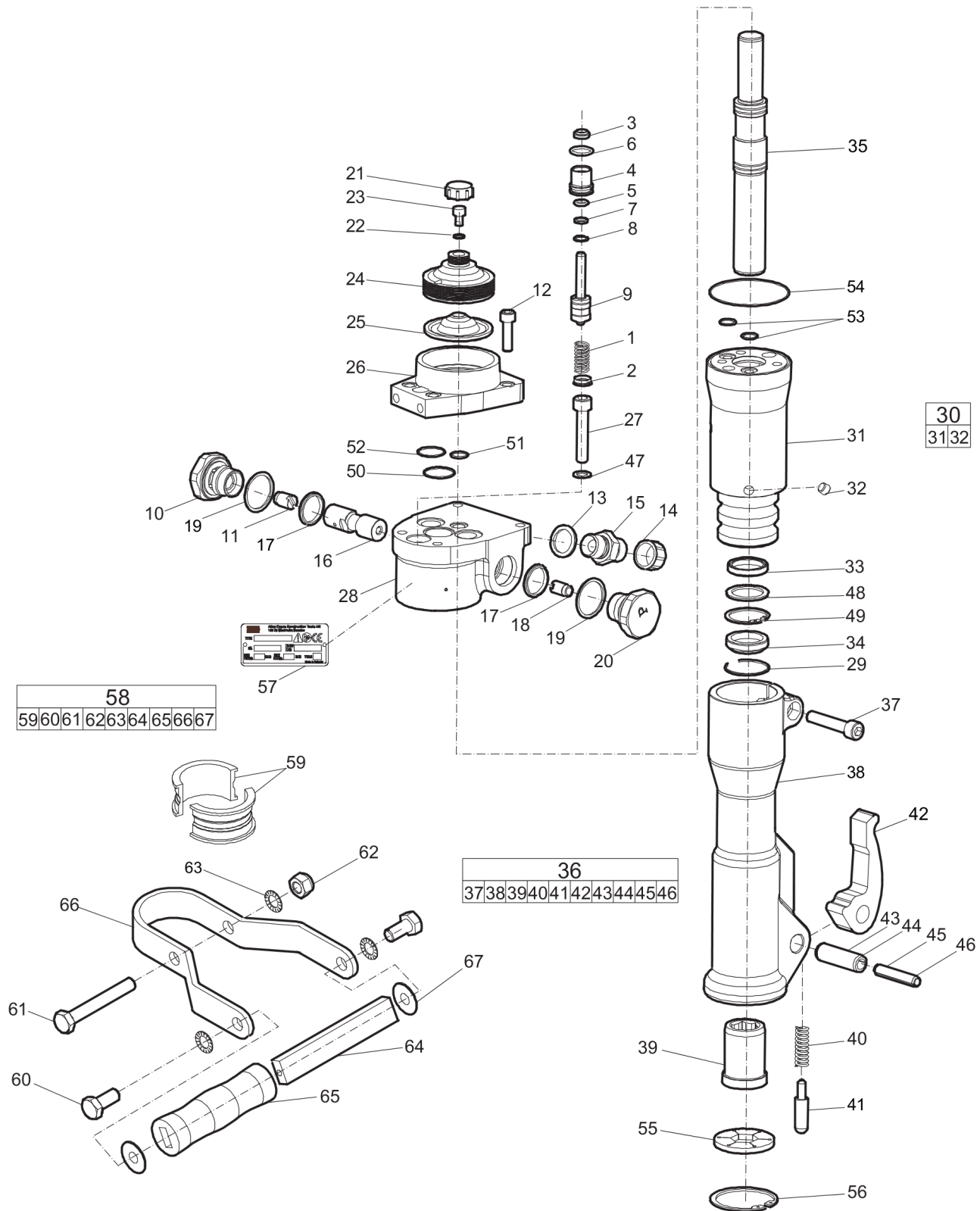
Description	Working length		Total length		Blade / Tip width		Weight	Part number
	mm	in	mm	in	mm	in	kg <sup>1)</sup>	
Moil point	380	15	475	19	-	-	1.5	1 3083 3242 00
	1000	39	1095	43	-	-	3.6	1 3083 3243 00
Narrow chisel	380	15	475	19	-	-	1.5	2 3083 3244 00
	1000	39	1095	43	-	-	3.6	2 3083 3245 00
Wide chisel	380	15	475	19	75	3	2.3	3 3083 3246 00
Asphalt cutter	380	15	475	19	125	5	3.2	4 3083 3069 00
Digging chisel	450	18	545	21	75	3	3.5	5 3083 3247 00
Digging spade	400	16	495	19	120	4 ¾	3.7	6 3083 3248 00
Clay spade	430	17	525	21	125	5	3.3	7 3083 3249 00
Wedge chisel	380	15	475	19	35	1 ⅜	2.6	8 3083 3250 00
Shaft for pad	310	12	405	16	-	-	1.3	9 3083 3251 00
Tamping pad	-	-	-	-	Ø175	Ø 7	7.5	10 3083 3252 10
	-	-	-	-	□175	□ 7	6.0	10 3083 3239 01
Driver pad	-	-	-	-	Ø 65	Ø2 ½	2.5	11 3371 8060 39
	-	-	-	-	Ø100	Ø 4	2.5	11 9245 2817 90

Refer to Parts Online for the most up to date information. The printed information might be outdated.

Fri Feb 04 04:33:14 UTC 2022

Item	Part No.	Name	Qty	L
1	3083324200	MoilPoint	1	
1	3083324300	Moil Point Hex 22 X 82.5 Mm	1	
2	3083324400	NarrowChisel	1	
2	3083324500	Narrow Chisel Hex 22 X 82.5 Mm	1	
3	3083324600	Wide Chisel Hex 22 X 82.5 Mm	1	
4	3083306900	Asphalt Cutter Hex 22 X 82.5 Mm	1	
5	3083324700	Digging Chisel Hex 22 X 82.5 Mm	1	
6	3083324800	Digging spade	1	
7	3083324900	Clay Spade Hex 22 X 82.5 Mm	1	
8	3083325000	Frost Wedge Hex 22 X 82.5 Mm	1	
9	3083325100	Shaft Hex 22 X 82.5 Mm	1	
10	3083325210	Tamping Pad, Round 175 Mm For Hex 22/25	1	
10	3083323901	Square Tamping Pad 175Mm	1	
11	3371806039	65Mm Driving Pad	1	
11	9245281790	Driver Pad Ø 100 Mm For Hex 22/25	1	

## Spare parts list LH 11



Refer to Parts Online for the most up to date information. The printed information might be outdated.

Fri Feb 04 04:33:15 UTC 2022

Item	Part No.	Name	Qty	L
1	3371814163	Spring	1	
2	3371814752	Washer	1	
3	3371805503	Seal Ø 0.71 x 0.55 x 0.14 x 0.20 in. Ø 18 x 14 x 3.5 x 5 mm	1	
4	3371814120	Packing gland	1	
5	3371814700	O-ring Ø 0.33 x 0.09 in. Ø 8.3 x 2.4 mm	1	
6	0663212300	O-ring Ø 0.64 x 0.09 in. Ø 16.3 x 2.4 mm	1	
7	3371814701	Back-up ring	1	
8	0335350152	Circlip	1	
9	3371820071	Trigger spool with rod	1	
10	3371814116	Guide socket T	1	
11	3371814115	Auxiliary spool T	1	
12	0211136400	Screw	4	
13	0661100039	Seal	2	
14	3371813709	Protective cap 1/2 in. BSP	2	
15	0603420010	Fitting	2	
16	3371814112	Spool	1	
17	0663212700	O-ring Ø 0.95 x 0.12 in. Ø 24.2 x 3 mm	2	
18	3371814113	Auxiliary spool P	1	
19	3371814710	O-ring Ø 1.30 x 0.08 in. Ø 33 x 2 mm	2	
20	3371814114	Guide socket P	1	
21	3376117071	Protective cap	1	
22	3371814709	Seal ring	1	
23	3371813103	Charging screw	1	
24	3371814066	Part Description Not Available	1	
25	3371814052	Diaphragm	1	
26	3371814067	Accumulator body	1	
27	3371815720	Screw	3	
28	3371814063	Valve housing	1	A
29	3371815738	Lock ring	1	
30	3371814064	Cylinder, complete	1	
31	--	Cylinder	1	
32	0686612600	Plug	4	
33	3371814172	Seal	1	
34	0665910091	Wiper	1	
35	3371814125	Piston	1	

Refer to Parts Online for the most up to date information. The printed information might be outdated.

Fri Feb 04 04:33:15 UTC 2022



This page intentionally left blank

Item	Part No.	Name	Qty	L
36	3371814069	Nose part, complete	1	
37	0211136800	Screw	2	
38	--	Nose part, Hexagon 7/8 in., Hexagon 22 mm	1	
39	3371814181	Circlip	1	
40	3371802075	Spring	1	
41	3371802073	Lock pin	1	
42	3371815122	O-ring Ø 0.87 x 0.06 in.Ø 22 x 1.5 mm	1	
43	0108151900	Roll pin Ø 0.63 x 1.97 in.Ø 16 x 50 mm	1	
44	0108151700	Roll Pin Ø16X40	1	
45	3371815731	Roll pin Ø 0.39 x 1.97 in.Ø 10 x 50 mm	1	
46	3372005012	Roll pin	1	
47	3371815735	Back-up washer	3	
48	3371814169	Lock pin	1	
49	3371814754	Circlip	1	
50	3371814748	O-ring Ø 0.98 x 0.06 in.Ø 25 x 1.5 mm	1	
51	3371814749	O-ring Ø 0.51 x 0.06 in. Ø 13 x 1.5 mm	1	
52	3371820706	O-ring Ø 0.87 x 0.06 in.Ø 22 x 1.5 mm	2	
53	3371814750	O-ring Ø 0.47 x 0.06 in.Ø 12 x 1.5 mm	2	
54	3371814751	O-ring Ø 2.72 x 0.06 in.Ø 69 x 1.5 mm	1	
55	3371814181	Circlip	1	
56	0335210208	Lock ring Ø 2.24 x 0.08 in.Ø 57 x 2 mm	1	
57	-	Data plate (Not available separately)	1	
58	3371801040	Front handle, complete	1	B
59	3371814187	Sector	2	
60	0147136003	Hexagon bolt	2	
61	3371814741	Screw, M10 x 70 mm	1	
62	0291111100	Locknut	1	
63	3371814743	Washer	3	
64	3371822107	Handle	1	
65	3371822108	Rubber handle	1	
66	3371814173	Bow	1	
67	3377104010	Washer 3/8x35	2	

Comments for Page: LH 11

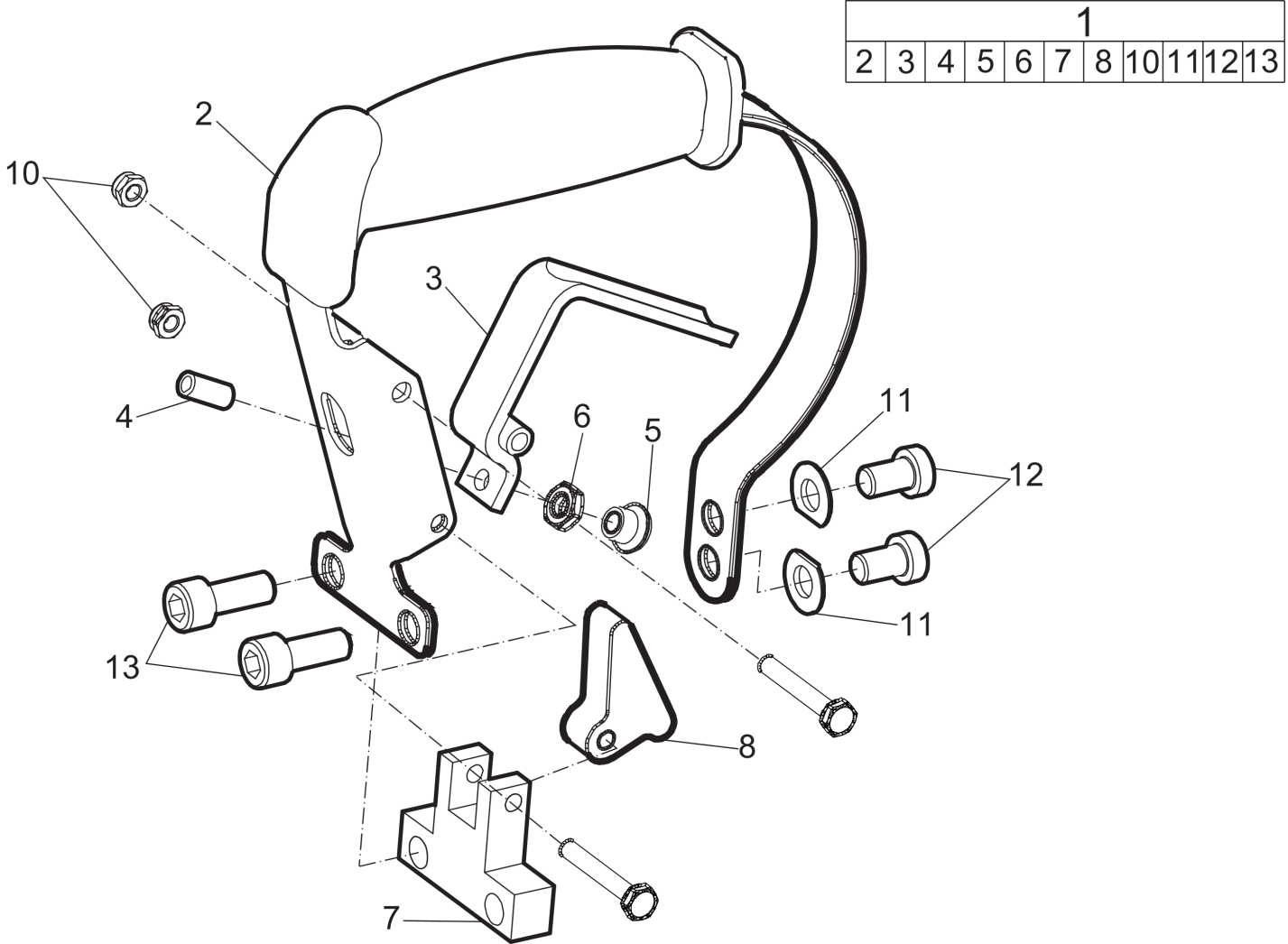
(L)OCAL REMARKS

A | Plugged

B | Optional

This page intentionally left blank

Spare parts list D-handle



Item	Part No.	Name	Qty	L
1	3371814062	D-handle, complete	1	
2	--	D-handle	1	
3	3371822002	Trigger lever	1	
4	0196132600	Set screw	1	
5	3371822105	Thrust pad	1	
6	3371820722	Nut M8	1	
7	3371822104	Backstop	1	
8	3371820131	Trigger pawl	1	
10	3371814716	Nut M6	2	
11	3371814134	Washer DIN 125	2	A
12	3371814721	Screw, M10 x 16 mm	2	
13	3376100001	Screw, M10 x 25 mm	2	

Comments for Page: D-handle

(L)OCAL REMARKS

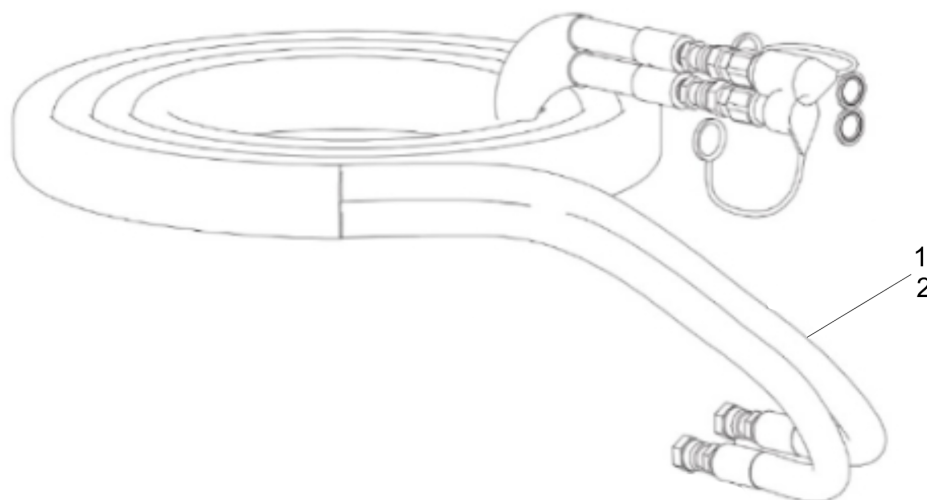
A | DIN 125

**Tightening torque** Tightening torque

NO EXPLODED VIEW  
AVAILABLE  
FOR THIS BOM

Item	Part No.	Name	Qty	L
-	3371814116	Guide socket T	-	A
-	0211136400	Screw	-	B
-	0603420010	Fitting	-	C
-	3371814114	Guide socket P	-	D
-	3371815720	Screw	-	E
-	3371814140	Bushing	-	G
-	0196132600	Set screw	-	H



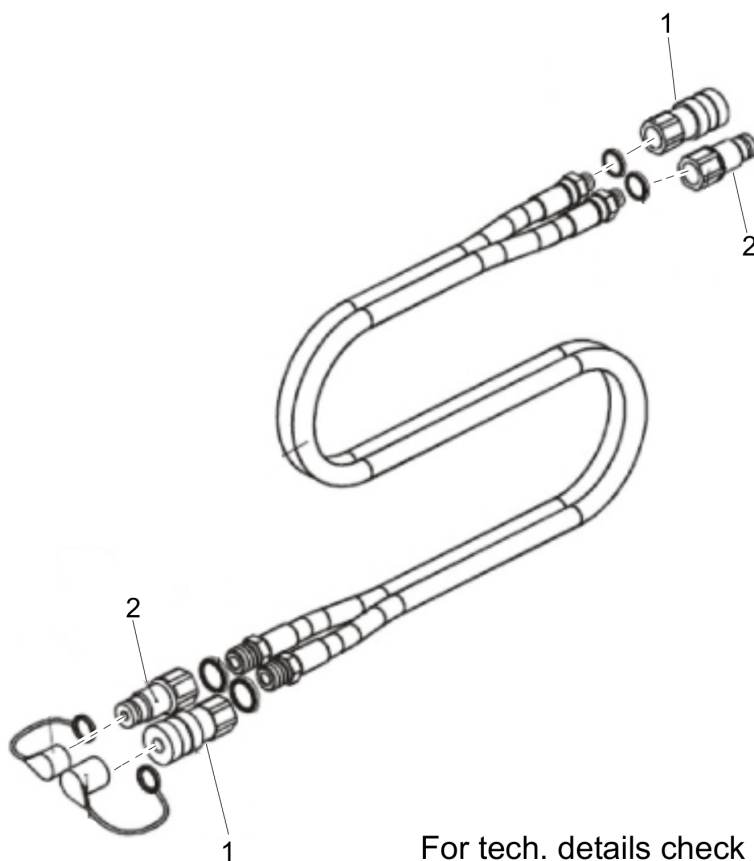
**Hydraulic Accessories** Hydraulic hoses

For tech. details check next page

This page intentionally left blank

Description	Length		Diameter		Weight	Comments	Part number
	m	ft	mm	in	kg <sup>1)</sup>		
Hydraulic twin-extension hose	7.0	23	12.5	½	8.3	Incl. ½ inch Flat-Face quick-release couplings	1 3371 8010 87
	12.0	39	12.5	½	13.3	Incl. ½ inch Flat-Face quick-release couplings	13371 8010 89
	7.0	23	12.5	½	8.0	Incl. ½ inch BSP female connection for direct mounting	13371 8010 82
Double connection hoses	1.6	5	12.5	½	1.7	-	2 3371 8011 90

Item	Part No.	Name	Qty	L
1	3371801087	7 m Twin extension hose	1	
1	3371801089	12 m Twin extension hose	1	
1	3371801082	7 m Twin hose	1	
2	3371801190	1.6 M TAIL-HOSE SET	1	

**Hydraulic Accessories** Hydraulic quick-release couplings

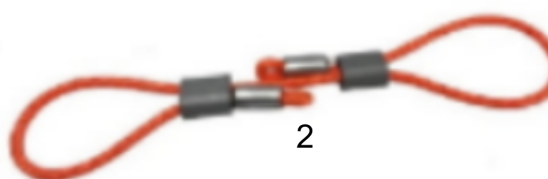
For tech. details check next page

This page intentionally left blank

Description	Length		Connection		Weight	Comments	Part number
	m	ft	mm	in	kg <sup>1)</sup>		
Flat-Face quick-release coupling	70	2 ¾	12.5	½	0.2	Female	13371 8051 33
	70	2 ¾	10.0	¾	0.2	Female	1 3371 8051 37
Flat-Face quick-release coupling	65	2 ½	12.5	½	0.2	Male	2 3371 8051 34
	65	2 ½	10.0	¾	0.2	Male	23371 8051 38

Item	Part No.	Name	Qty	L
1	3371805133	Quick release coupling	2	
1	3371805137	Q.R. coupling 06 female	2	
2	3371805134	Quick release coupling	2	
2	3371805138	Flat-Face quick-release coupling	2	



**Accessories** Whip Check

Refer to Parts Online for the most up to date information. The printed information might be outdated.

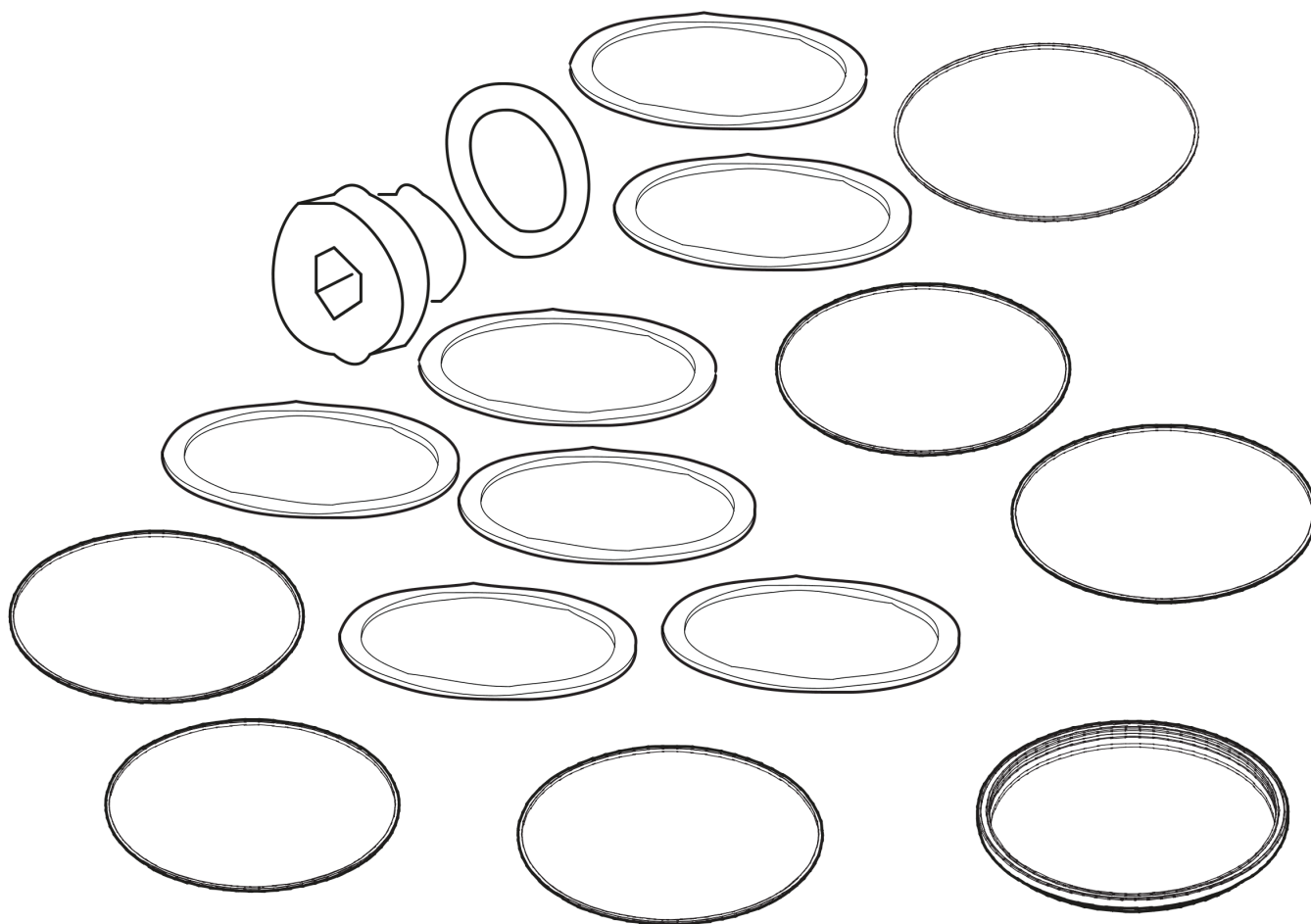
Fri Feb 04 04:33:17 UTC 2022

Item	Part No.	Name	Qty	L
1	3310101858	WhipChecks	1	
1	3310101859	Whip Check 1.1/2"-3",L=965mm,BS=2350kg	1	
1	3310101860	Whip Check 3"-6",L=1150mm,BS=2350kg	1	
2	3310102546	Whip check Pro 1/2 -4",L=500mm,BS=1000kg	1	

**Kits** Label kit

NO EXPLODED VIEW  
AVAILABLE  
FOR THIS BOM

Item	Part No.	Name	Qty	L
1	3371821094	Label kit	1	
Not Shown	-	Shank size, "Shank size 22 x 82.5"	1	
Not Shown	-	Product label	1	A
-	3371896061	Safety label	1	
Not Shown	-	Product label	1	B
Not Shown	-	Noise level label	1	
Not Shown	-	EHTMA Category C	1	C
Not Shown	-	Pressure charge	1	

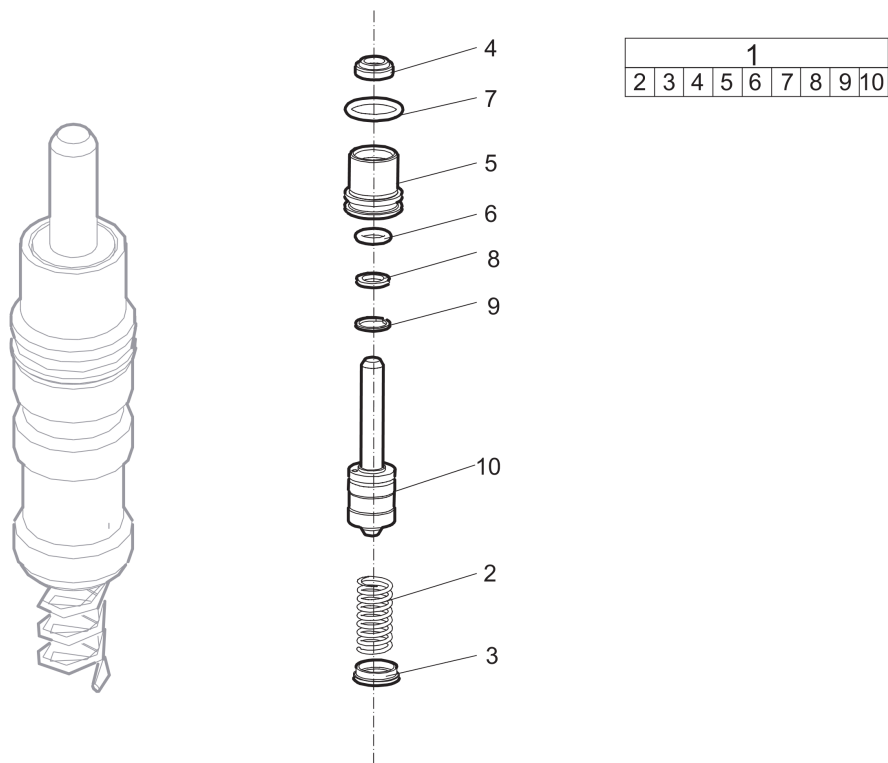
**Kits** Seal kit

Refer to Parts Online for the most up to date information. The printed information might be outdated.

Fri Feb 04 04:33:18 UTC 2022

Item	Part No.	Name	Qty	L
1	3371814057	Seal kit	1	
-	3371805503	Seal Ø 0.71 x 0.55 x 0.14 x 0.20 in. Ø 18 x 14 x 3.5 x 5 mm	1	
-	3371814700	O-ring Ø 0.33 x 0.09 in. Ø 8.3 x 2.4 mm	1	
-	0663212300	O-ring Ø 0.64 x 0.09 in. Ø 16.3 x 2.4 mm	1	
-	3371814701	Back-up ring	1	
-	0335350152	Circlip	1	
-	0661100027	Seal washer	2	
-	0663212700	O-ring Ø 0.95 x 0.12 in. Ø 24.2 x 3 mm	2	
-	3371814710	O-ring Ø 1.30 x 0.08 in. Ø 33 x 2 mm	2	
-	3371814709	Seal ring	1	
-	3371815738	Lock ring	1	
-	3371814754	Circlip	1	
-	3371814748	O-ring Ø 0.98 x 0.06 in. Ø 25 x 1.5 mm	1	
-	3371814749	O-ring Ø 0.51 x 0.06 in. Ø 13 x 1.5 mm	1	
-	3371820706	O-ring Ø 0.87 x 0.06 in. Ø 22 x 1.5 mm	2	
-	3371814750	O-ring Ø 0.47 x 0.06 in. Ø 12 x 1.5 mm	2	
-	3371814751	O-ring Ø 2.72 x 0.06 in. Ø 69 x 1.5 mm	1	

**Kits** Trigger valve kit

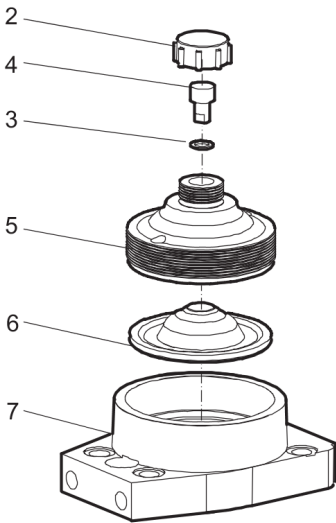


Item	Part No.	Name	Qty	L
1	3371814058	Trigger valve kit	1	
2	3371814163	Spring	1	
3	3371814752	Washer	1	
4	3371805503	Seal Ø 0.71 x 0.55 x 0.14 x 0.20 in. Ø 18 x 14 x 3.5 x 5 mm	1	
5	3371814120	Packing gland	1	
6	3371814700	O-ring Ø 0.33 x 0.09 in. Ø 8.3 x 2.4 mm	1	
7	0663212300	O-ring Ø 0.64 x 0.09 in. Ø 16.3 x 2.4 mm	1	
8	3371814701	Back-up ring	1	
9	0335350152	Circlip	1	
10	3371820071	Trigger spool with rod	1	

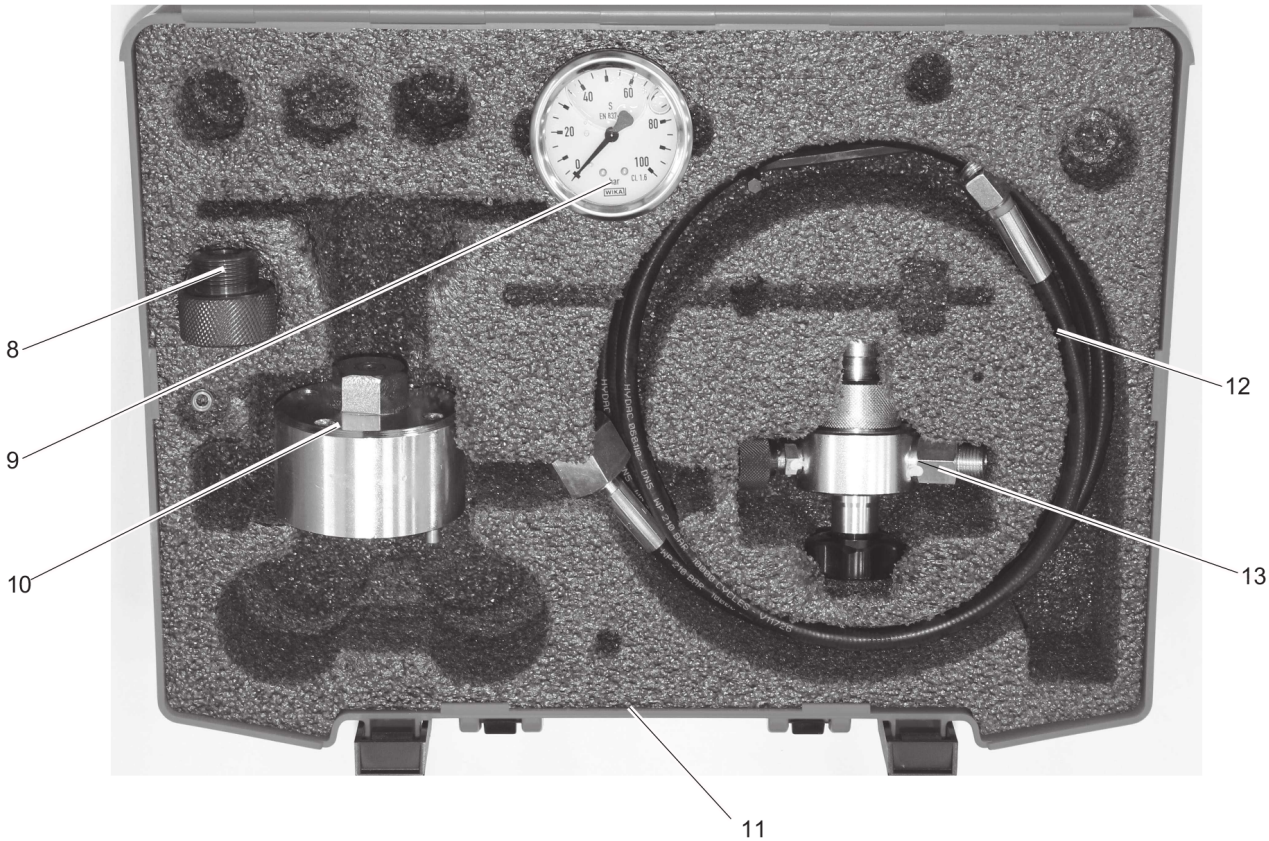


**Kits** Accumulator kit

				1		
2	3	4	5	6	7	



				8		
9	10	11	12	13	14	



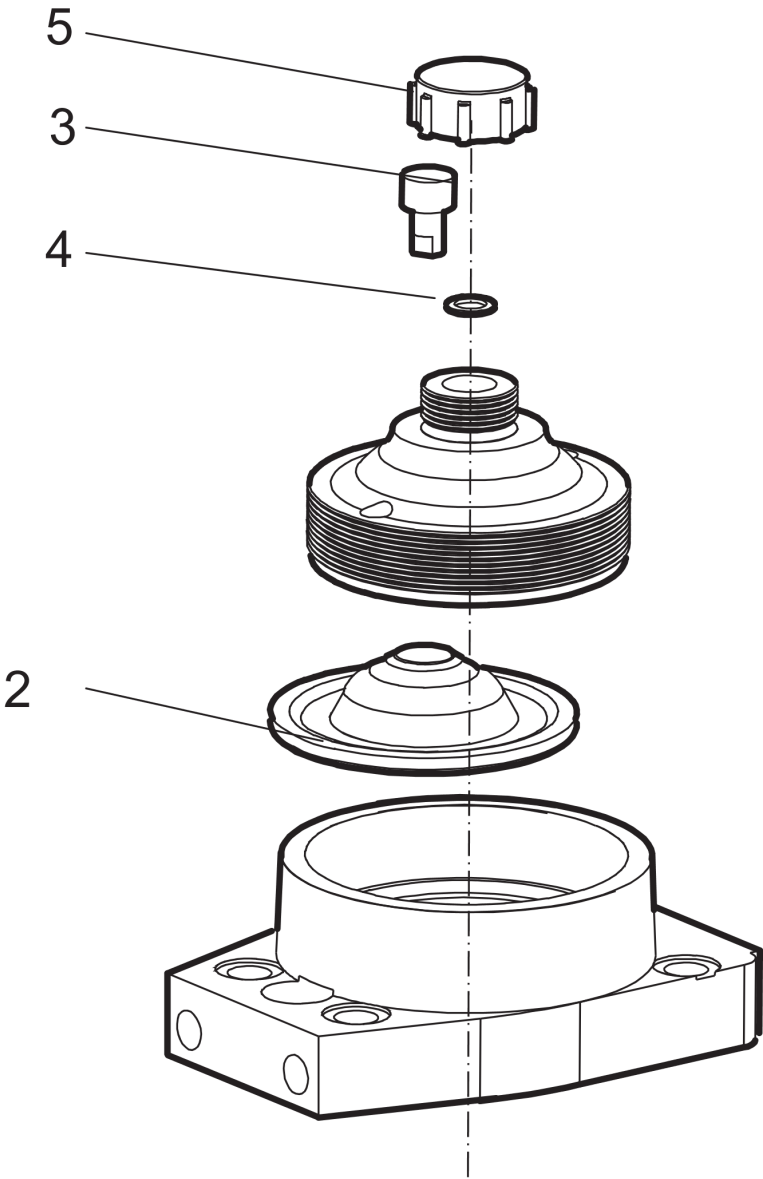
Refer to Parts Online for the most up to date information. The printed information might be outdated.

Fri Feb 04 04:33:20 UTC 2022

Item	Part No.	Name	Qty	L
1	3371814068	Accumulator kit	1	
2	3376117071	Protective cap	1	
3	3371814709	Seal ring	1	
4	3371813103	Charging screw	1	
5	3371814066	Part Description Not Available	1	
6	3371814052	Diaphragm	1	
7	3371814067	Accumulator body	1	
8	3371801155	FILLING DEVICE COMPLETE	1	
9	3371807780	Adapter	1	
10	-	Manometer	1	
11	3371807760	Tool for accumulator	1	
12	-	Suitcase	1	
13	3371807779	Charging hose	1	
14	3371807778	Charging device	1	
Not Shown	-	Adapters	1	

**Kits** 3310101845\_Accumulator repair kit

1				
2	3	4	5	



Item	Part No.	Name	Qty	L
1	3310101845	Accumulator repair kit	1	
2	3371814052	Diaphragm	1	
3	3371813103	Charging screw	1	
4	3371814709	Seal ring	1	
5	3376117071	Protective cap	1	

Any unauthorized use or copying of the contents or any part thereof is prohibited.  
This applies in particular to trademarks, model denominations, part numbers, and  
drawings.

