

# **TEX P90, P90 S PNE s/n PUN000001 - PUN000331**

Spare Parts List: Handheld pneumatic breakers

## Oil

Breaker & hammer air-oil (Synthetic) . . . . .	1
Air oil (mineral) . . . . .	5

## Working tools

### Breaker and Hammer Steel

Working tools 28 x 160 mm (Hex.1 1/8 x 6 1/4 in) Point to Flat (ISO) . . . . .	9
Working tools 32 x 160 mm (Hex.1 1/4 x 6 1/4 in) Point to Flat (ISO) . . . . .	13

## Spare parts list

TEX P90 hex 28 x 160, TEX P90 hex 32 x 160 . . . . .	18
TEX P90 S hex 28 x 160, TEX P90 S hex 32 x 160 . . . . .	23

## Accessories

### Lubricators

Lubricators, fitted with claw couplings AC . . . . .	27
------------------------------------------------------	----

### Water separators

Water separators, fitted with claw couplings . . . . .	31
--------------------------------------------------------	----

### Air Couplings & Fittings

Claw couplings for maximum airflow (forged) . . . . .	35
Packings and lock springs for claw couplings (forged) . . . . .	41
Claw couplings, US type (casted) . . . . .	45
Packings and lock springs for US claw couplings . . . . .	49
Hose Clamps for US type forged Claw Couplings . . . . .	53
Hose clamps for Atlas Copco forged claw couplings . . . . .	57
Hose nipples . . . . .	61
Connecting nipples . . . . .	65
Cup nuts . . . . .	69
Branch pipes . . . . .	73

## Air Hoses

### X-Lite

X-Lite rolls hose . . . . .	77
X-Lite Pre-mounted hoses . . . . .	81

### H-Lite

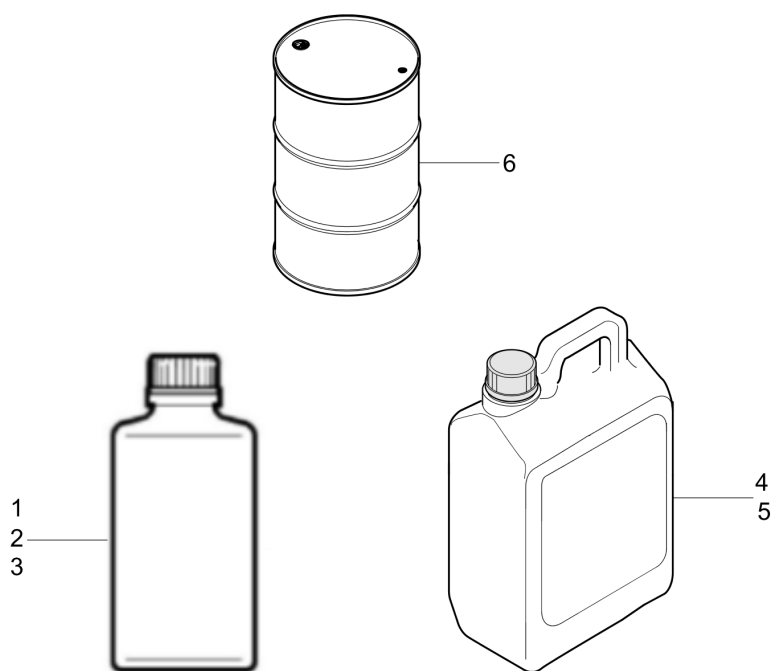
H-Lite hoses . . . . .	85
------------------------	----

### Rubber Hoses

Rubber pre-mounted hoses fitted with couplings and hose clamps . . . . .	89
Hose rolls . . . . .	93
Whip Check . . . . .	97

## Kits

Accessories kit . . . . .	99
---------------------------	----

**Oil** Breaker & hammer air-oil (Synthetic)

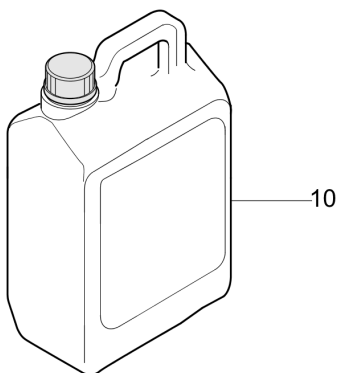
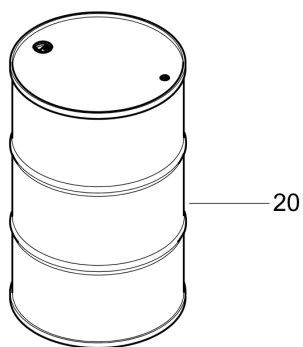
For tech. details check next page

This page intentionally left blank



Description	Oil Volume		Weight		Parts number
	l	Gal			
0.25 l bottle	0.2	0.05	0.3	1	8099020240
1 bottel	1	0.22	1.1	2	8099020236
20 × 1 bottel(Pack)	20	4.4	22	3	8099020281
5l container	5	1.1	5.8	4	8099020202
4 x 5 l containers (pack)	20	4.4	24	5	8099020285
210 l container	210	55.4	231	6	3310102544

Item	Part No.	Name	Qty	L
1	8099020240	Breaker and hammer AIR-OIL,0.25 l, 0.06 US gallon	1	
2	8099020236	BreakerHammeroil - 1 L	1	
3	8099020281	Breaker and hammer AIR-OIL, 20 x 1 l bottles (pack)	1	
4	8099020202	Breaker and hammer air-oil 5l	1	
5	8099020285	Breaker and hammer AIR-OIL , 4 x 5 l containers (pack)	1	
6	3310102544	Breaker and hammer air-oil 200l	1	

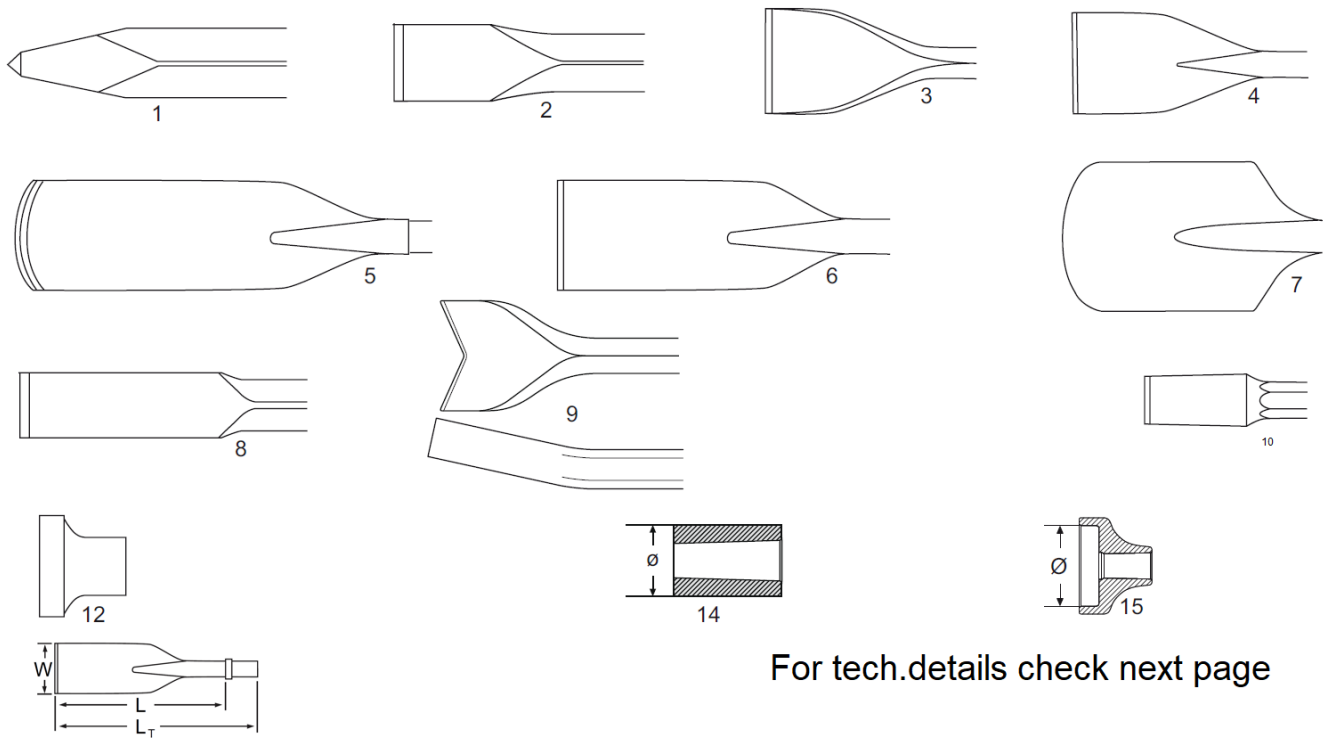
**Oil** Air oil (mineral)

For tech. details check next page

This page intentionally left blank

Description	Oil Volume		Weight		Parts number
	l	Gal			
5L Can	5	1.1	5.8	10	3310103155
210 Drum	210	55.4	231	20	3310103156

Item	Part No.	Name	Qty	L
10	3310103155	Air oil 5L	1	
20	3310103156	Air oil 210Drum	1	

**Breaker and Hammer Steel** Working tools 28 x 160 mm (Hex.1 1/8 x 6 1/4 in) Point to Flat (ISO)

This page intentionally left blank

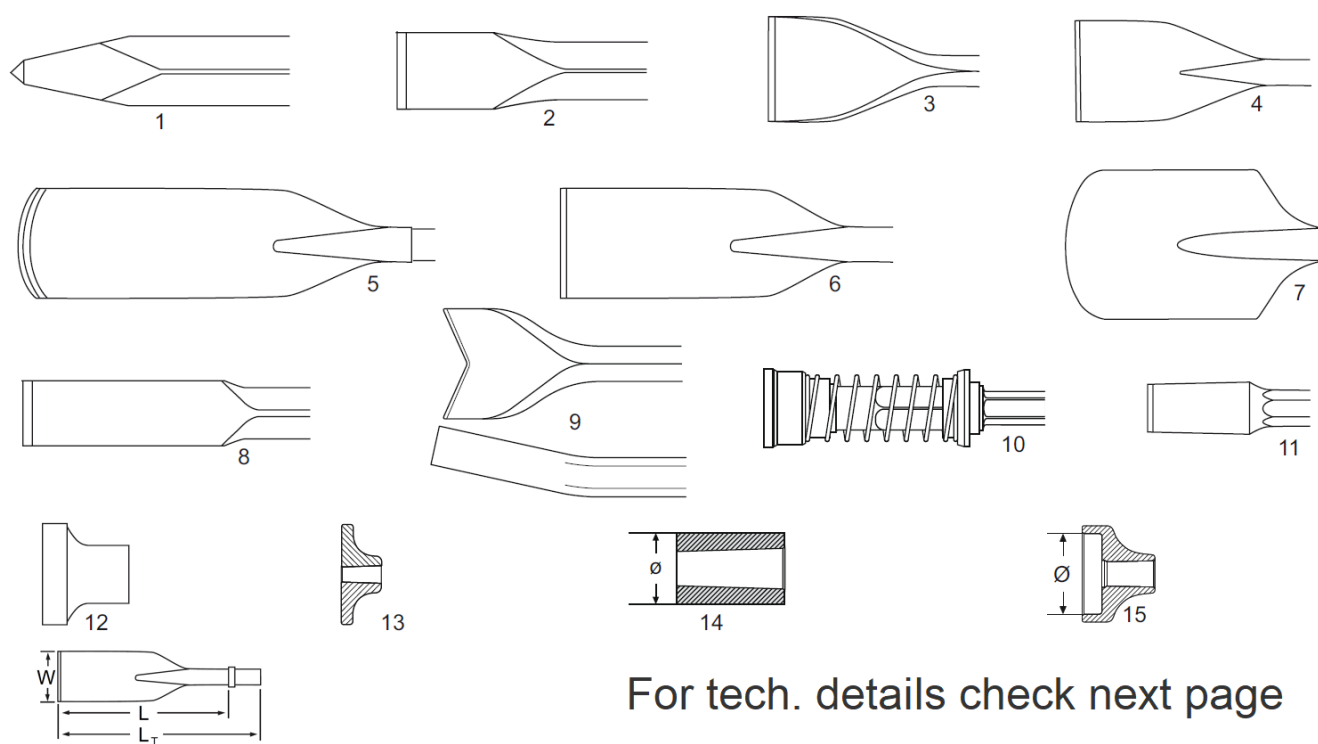


Description	Working length		Total length		Blade / Tip width		Weight	Part number	
	mm	in	mm	in	mm	in	kg <sup>1)</sup>		
Moil point	380	15	545	21	-	-	2.8	1	3083 3271 00
	450	18	615	24	-	-	3.3	1	3083 3272 00
	1000	39	1165	46	-	-	6.3	1	3083 3273 00
Narrow chisel	380	15	545	21	-	-	2.8	2	3083 3274 00
	450	18	615	24	-	-	3.3	2	3083 3275 00
	1000	39	1165	46	-	-	6.3	2	3083 3276 00
Wide chisel	380	15	545	21	75	3	3.1	3	3083 3277 00
Asphalt cutter	300	12	465	18	115	4 ½	3.6	4	3083 3278 00
Digging chisel	380	15	545	21	75	3	4	5	3083 3279 00
Digging spade	380	15	545	21	125	5	4.7	6	3083 3280 00
Clay spade	380	15	545	21	140	5 ½	5.4	7	3083 3281 00
Wedge chisel	400	16	565	22	40	1 ½	3.9	8	3083 3282 00
Tie tamper	400	16	565	22	100	4	4.3	9	3083 3319 00
Shaft for pad	230	9	395	16			2.8	10	3083 3283 01
Tamping pad	-	-	-	-	Ø180	Ø 7	7.2	11	3083 3301 00
	-	-	-	-	□150	□6	8.3	11	3083 3302 00
	-	-	-	-	□200	□ 8	8.5	11	3083 3197 00
Driver blank	-	-	-	-	Ø 80	Ø 3	3.5	12	9245 2827 10
Driver Pad	-	-	-	-	Ø120	Ø5	6.0	13	3376 1120 79
	-	-	-	-	Ø150	Ø6	7.0	13	3376 1120 77

Refer to Parts Online for the most up to date information. The printed information might be outdated.

Fri Feb 04 02:08:27 UTC 2022

Item	Part No.	Name	Qty	L
1	3083327100	Moil Point Hex 28 X 160 Mm	1	
1	3083327200	Moil Point Hex 28 X 160 Mm	1	
1	3083327300	Moil Point Hex 28 X 160 Mm	1	
2	3083327400	Narrow Chisel Hex 28 X 160 Mm	1	
2	3083327500	Narrow Chisel Hex 28 X 160 Mm	1	
2	3083327600	Narrow Chisel Hex 28 X 160 Mm	1	
3	3083327700	Wide Chisel Hex 28 X 160 Mm	1	
4	3083327800	Asphalt Cutter Hex 28 X 160 Mm	1	
5	3083327900	Digging Chisel Hex 28 X 160 Mm	1	
6	3083328000	Digging Spade Hex 28 X 160 Mm	1	
7	3083328100	Clay Spade Hex 28 X 160 Mm	1	
8	3083328200	Frost Wedge Hex 28 X 160 Mm	1	
9	3083331900	Tie Tamper Hex 28 X 160 Mm	1	
10	3083328301	Shaft Hex 28 X 160 Mm	1	
11	3083330100	Tamping Pad, Round 180 Mm For Hex 28/32	1	
11	3083330200	Tamping Pad, Square 150 Mm For Hex 28/32	1	
11	3083319700	Tamping Pad, Square 200 Mm For Hex 28/32	1	
12	9245282710	Driver Blank 80 Mm For Hex 28/32	1	
13	3376112079	Driver Pad Ø 120 Mm For Hex 28 & 32	1	
13	3376112077	Driver Pad Ø 150 Mm For Hex 28 & 32	1	

**Breaker and Hammer Steel** Working tools 32 x 160 mm (Hex.1 1/4 x 6 1/4 in) Point to Flat (ISO)

This page intentionally left blank

Description	Working length		Total length		Blade / Tip width		Weight	Part number
	mm	In	mm	In	mm	In	kg <sup>1)</sup>	
Moil point	380	15	545	21	-	-	3.5	3083 3205 00
	450	18	615	24	-	-	4.0	3083 3206 00
	1000	39	1165	46	-	-	7.6	3083 3207 00
Narrow chisel	380	15	545	21	-	-	3.5	3083 3208 00
	450	18	615	24	-	-	4.0	3083 3209 00
	1000	39	1165	46	-	-	7.6	3083 3210 00
Wide chisel	380	15	545	21	75	3	3.7	3083 3211 00
Asphalt cutter	300	12	465	18	115	4 ½	3.8	3083 3212 00
Digging chisel	380	15	545	21	75	3	4.4	3083 3213 00
Digging spade	380	15	545	21	125	5	5.1	3083 3214 00
Clay spade	380	15	545	21	140	5 ½	5.4	3083 3215 00
Wedge chisel	400	16	565	22	40	1 ½	4.1	3083 3216 00
Tie tamper	400	16	565	22	100	4	4.9	3083 3217 00
	580	23	745	29	100	4	6.2	3083 3217 10
Spiking tool	195	7 ¾	360	14	-	-	4.6	9245 2826 81
Shaft for pad	235	9 ¼	400	16	-	-	3.2	3083 3218 01
Tamping pad	-	-	-	-	Ø180	Ø 7	7.2	3083 3301 00
	-	-	-	-	□150	□6	8.3	3083 3302 00
	-	-	-	-	□200	□8	8.5	3083 3197 00
Driver blank	-	-	-	-	Ø 80	Ø 3	3.5	9245 2827 10
Driver Pad	-	-	-	-	Ø120	Ø5	6.0	3376 1120 79
	-	-	-	-	Ø150	Ø6	7.0	3376 1120 77

Refer to Parts Online for the most up to date information. The printed information might be outdated.

Fri Feb 04 02:08:27 UTC 2022

Item	Part No.	Name	Qty	L
1	3083320500	MoilPoint	1	A
1	3083320600	Moil point hex 32 x 160 mm	1	B
1	3083320700	Moil Point Hex 32 X 160 Mm	1	C
2	3083320800	NarrowChisel	1	D
2	3083320900	Narrow chisel hex 32 x 160 mm	1	E
2	3083321000	Narrow Chisel Hex 32 X 160 Mm	1	F
3	3083321100	Wide Chisel Hex 32 X 160 Mm	1	G
4	3083321200	Asphalt Cutter Hex 32 X 160 Mm	1	H
5	3083321300	Digging Chisel Hex 32 X 160 Mm	1	I
6	3083321400	Digging Spade Hex 32 X 160 Mm	1	J
7	3083321500	Clay Spade Hex 32 X 160 Mm	1	K
8	3083321600	Frost Wedge Hex 32 X 160 Mm	1	L
9	3083321700	Tie Tamper Hex 32 X 160 Mm	1	M
9	3083321710	Tie Tamper Hex 32 X 160 Mm	1	N
10	9245282681	Spiking Tool Hex 32 X 160 Mm	1	O
11	3083321801	Shaft Hex 32 X 160 Mm	1	P
12	3083330100	Tamping Pad, Round 180 Mm For Hex 28/32	1	Q
13	3083330200	Tamping Pad, Square 150 Mm For Hex 28/32	1	R
13	3083319700	Tamping Pad, Square 200 Mm For Hex 28/32	1	S
14	9245282710	Driver Blank 80 Mm For Hex 28/32	1	T
15	3376112079	Driver Pad Ø 120 Mm For Hex 28 & 32	1	U
15	3376112077	Driver Pad Ø 150 Mm For Hex 28 & 32	1	V

Comments for Page: Working tools 32 x 160 mm (Hex.1 1/4 x 6 1/4 in) Point to Flat (ISO)

(L)OCAL REMARKS

A | W= - L=380 mm(15"), Lt=545 mm(21"), Wt=3,5 kg

B | W= - L=450 mm(18"), Lt=615 mm(24"), Wt=4,0 kg

C | W= - L=1000 mm(39"), Lt=1165 mm(46"), Wt=7,6 kg

D | W= - L=380 mm(15"), Lt=545 mm(21"), Wt=3,5kg

E | W= - L=450 mm(18"), Lt=615 mm(24"), Wt=4,0 kg

F | W= - L=1000 mm(39"), Lt=1165 mm(46"), Wt=7,6 kg

G | W= 75(3") L=380 mm(15"), Lt=545 mm(21"), Wt=3,7 kg

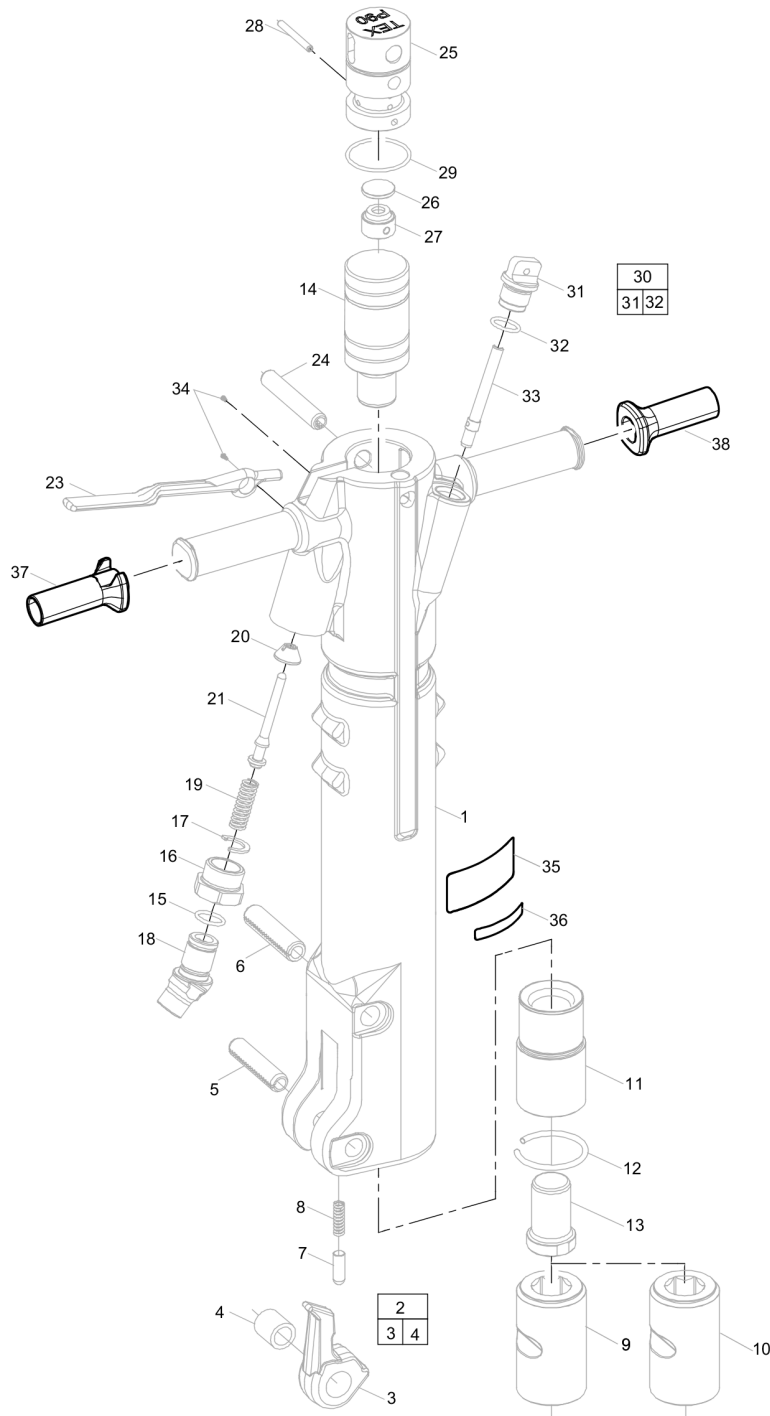
H | W= 115(4 1/2") L=300 mm(12"), Lt=465 mm(18"), Wt=3,8 kg

I | W= 75(3") L=380 mm(15"), Lt=545 mm(21"), Wt=4,4 kg

J | W= 125(5") L=380 mm(15"), Lt=545 mm(21"), Wt=5,1 kg  
K | W= 140(5 1/2") L=380 mm(15"), Lt=545 mm(21"), Wt=5,4 kg  
L | W= 40 (1 1/2") L=400 mm(16"), Lt=565 mm(22"), Wt=4,1 kg  
M | W= 100(4") L=400 mm(16"), Lt=565 mm(22"), Wt=4,9 kg  
N | W= 100(4") L=580 mm(23"), Lt=745 mm(29"), Wt=6,2 kg  
O | W= - L= 195 mm(7 3/4), Lt= 360 mm(14"), Wt=4,6 kg  
P | W= - L= 235 mm(9 1/4), Lt= 400 mm(16"), Wt=3,2 kg  
Q | W=180(Ø 7") L= - mm, Lt= - mm, Wt=7,2 kg  
R | W= 150 (6") L= - mm, Lt= - mm, Wt=8,3 kg  
S | W= 200(8") L= - mm, Lt= - mm, Wt= 8,5 kg  
T | W= Ø80(Ø 3") L= - mm, Lt= - mm, Wt= 3,5 kg  
U | W= Ø120(Ø5") L= - mm, Lt= - mm, Wt= - kg  
V | W= Ø150(Ø6") L= - mm, Lt= - mm, Wt= - kg

This page intentionally left blank



**Spare parts list** TEX P90 hex 28 x 160, TEX P90 hex 32 x 160

Refer to Parts Online for the most up to date information. The printed information might be outdated.

Fri Feb 04 02:08:30 UTC 2022

Item	Part No.	Name	Qty	L
1	3310126700	Main body	1	
2	3310088980	Tool retainer, complete	1	
3	--	Tool retainer	1	
4	3310089200	Bush	1	
5	0108169106	Spring pin, Ø18 x 80 mm	1	
6	0108169154	Spring pin, Ø20 x 80 mm	1	
7	3310089300	Plunger	1	
8	3310089400	Spring	1	
9	3310126301	Tool bushing, hexagon 28 x 160 mm, 28 x 152 mm	1	
10	3310126300	Tool bushing, hexagon 32 x 160 mm, 32 x 152 mm	1	
11	3310126400	Intermediate part	1	
12	3310105300	Lock ring	1	
13	3310126500	Anvil	1	
14	3310126600	Piston	1	
15	0663212600	O ring	1	
16	3310104400	Swivel nut	1	
17	3310105900	Lock wassher	1	
18	3310125701	Swivel	1	A
19	3310121600	Spring	1	
20	3310121100	Inlet valve	1	
21	3310125800	Valve stem	1	
23	3310125100	Trigger	1	
24	0108169155	Spring pin	1	
25	3310125601	Valve housing	1	
26	3310117300	Main valve	1	
27	3310124500	Valve cover	1	
28	0108133500	Spring pin, Ø6 x 55 mm	1	
29	0663613400	O-ring, Ø 49.5 x 3 mm, Ø 1.95 x 0.12 in.	1	
30	3310153880	Oil plug, complete	1	
31	--	Oil plug	1	
32	0663212600	O ring	1	
33	3310126000	Dosing feeder	1	
34	0244414400	Drive screw	2	
35	0690110103	Product label	1	B
36	3310129200	Label	1	C

Refer to Parts Online for the most up to date information. The printed information might be outdated.

Fri Feb 04 02:08:30 UTC 2022

This page intentionally left blank

Item	Part No.	Name	Qty	L
37	3310101883	Handle Grip	1	
38	3310101884	Handle Grip	1	

Comments for Page: TEX P90 hex 28 x 160, TEX P90 hex 32 x 160

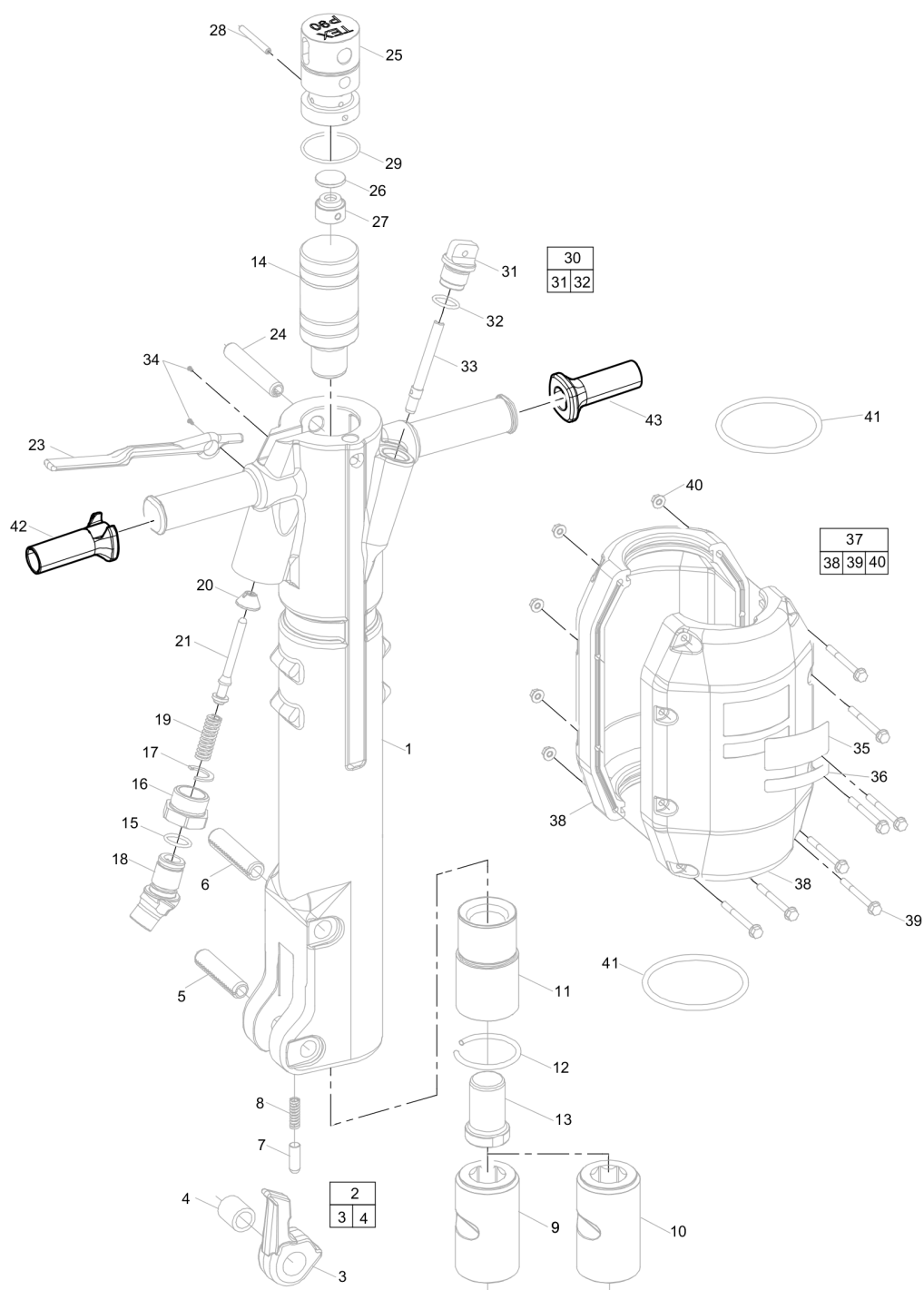
(L)OCAL REMARKS

A | 3/4"

B | Atlas Copco

C | P90

**Spare parts list** TEX P90 S hex 28 x 160, TEX P90 S hex 32 x 160



Refer to Parts Online for the most up to date information. The printed information might be outdated.

Fri Feb 04 02:08:31 UTC 2022

Item	Part No.	Name	Qty	L
1	3310126700	Main body	1	
2	3310088980	Tool retainer, complete	1	
3	--	Tool retainer	1	
4	3310089200	Bush	1	
5	0108169106	Spring pin, Ø18 x 80 mm	1	
6	0108169154	Spring pin, Ø20 x 80 mm	1	
7	3310089300	Plunger	1	
8	3310089400	Spring	1	
9	3310126301	Tool bushing, hexagon 28 x 160 mm, 28 x 152 mm	1	
10	3310126300	Tool bushing, hexagon 32 x 160 mm, 32 x 152 mm	1	
11	3310126400	Intermediate part	1	
12	3310105300	Lock ring	1	
13	3310126500	Anvil	1	
14	3310126600	Piston	1	
15	0663212600	O ring	1	
16	3310104400	Swivel nut	1	
17	3310105900	Lock wassher	1	
18	3310125701	Swivel	1	A
19	3310121600	Spring	1	
20	3310121100	Inlet valve	1	
21	3310125800	Valve stem	1	
23	3310125100	Trigger	1	
24	0108169155	Spring pin	1	
25	3310125601	Valve housing	1	
26	3310117300	Main valve	1	
27	3310124500	Valve cover	1	
28	0108133500	Spring pin, Ø6 x 55 mm	1	
29	0663613400	O-ring, Ø 49.5 x 3 mm, Ø 1.95 x 0.12 in.	1	
30	3310153880	Oil plug, complete	1	
31	--	Oil plug	1	
32	0663212600	O ring	1	
33	3310126000	Dosing feeder	1	
34	0244414400	Drive screw	2	
35	3310101929	Label "Atlas Copco"	1	B
36	3310101922	Label	1	C

Refer to Parts Online for the most up to date information. The printed information might be outdated.

Fri Feb 04 02:08:31 UTC 2022

This page intentionally left blank

Item	Part No.	Name	Qty	L
37	3310126180	Silencer, complete	1	
38	--	Silencer	1	
39	0147300032	Flange screw	8	
40	9232020750	Flange nut	8	
41	0663214600	O-ring - muffler	2	
42	3310101883	Handle Grip	1	
43	3310101884	Handle Grip	1	

Comments for Page: TEX P90 S hex 28 x 160, TEX P90 S hex 32 x 160

(L)OCAL REMARKS

A | 3/4"

B | Atlas Copco

C | P90 S



**Lubricators** Lubricators, fitted with claw couplings AC

1 3  
5 6



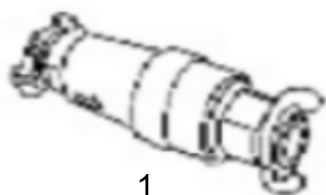
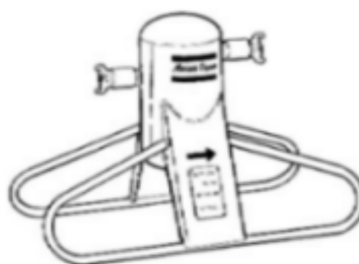
2  
4

For tech. details check next page

This page intentionally left blank

Parts Description	Hose connection		Air flow		Oil vol- ume		Weight <small>(kg)</small>	Max working pressure		Bub	Part number
	mm	in	l/s	cfm	l	gal		Bar	PSI		
CLG-30 (black)	25	1	15 – 140	32 – 300	1.3	0.3	3	20	290	1	8202510239
BLG 30 (yellow)	25	1	15 – 140	32 – 300	1.3	0.3	3	20	290	2	8202510205
CLG 30 (US-Version)	25	1	15 – 140	32 – 300	1.3	0.3	3	20	290	3	8202510240
BLG 30 (US-Version)	25	1	15 – 140	32 – 300	1.3	0.3	3	20	290	4	8202510214
CLG 10										5	8202510123
CLG 10 (US)										6	8202510124

Item	Part No.	Name	Qty	L
1	8202510239	Lubricator	1	
2	8202510205	BLG 30, for mineral oil (EU)	1	
3	8202510240	CLG 30,for both mineral and synthetic oil (US)	1	
4	8202510214	BLG 30, for mineral oil (US)	1	
5	8202510123	CLG 10	1	
6	8202510124	CLG 10 (US)	1	

**Water separators** Water separators, fitted with claw couplings1  
32  
4

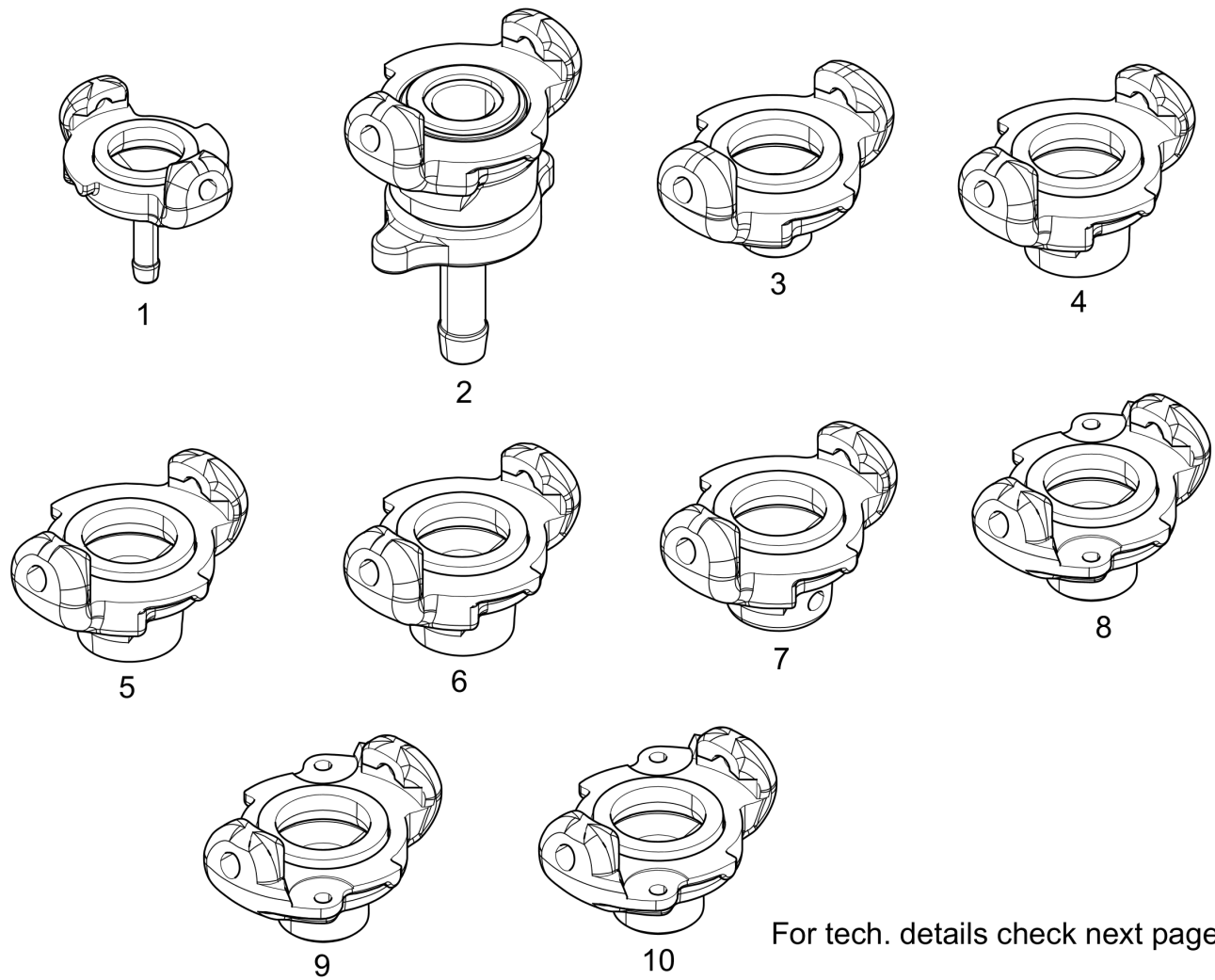
For tech. details check next page

This page intentionally left blank

Product Range	Parts description	Hose connectio		Air flow		Weight	Max working pressure		Bub	Part number
		mm	in	l/s	cfm	kg 1)	Bar	PSI		
Water seperator	VAM 01	20	3/4	50	106	0.8	8 bar	115.0	1	8092011058
Water seperator	VAM 05 A	25	1	120	254	10	8 bar	115.0	2	8092011082
Water seperator	VAM 01(US)	20	3/4	50	106	0.8	8 bar	115.0	3	8092011059
Water seperator	Version)	25	1	120	254	10	8 bar	115.0	4	8092011083

Item	Part No.	Name	Qty	L
1	8092011058	WaterSeparator	1	
2	8092011082	VAM 5A (EU) European type claw couplings	1	
3	8092011059	VAM 01 (US) US type claw couplings	1	
4	8092011083	Water separator VAM 5A US version (3/4 in. NPT)	1	



**Air Couplings & Fittings** Claw couplings for maximum airflow (forged)

For tech. details check next page

This page intentionally left blank

Connection	Hose inner diameter		Bore		Weight	Part number
	mm	in	mm	in	kg <sup>1)</sup>	
Hose nipple	6.3	¼	5.0	⅜	0.11	1 9000 0308 00
	10.0	⅜	8.0	⅝	0.13	1 9000 0309 00
	12.5	½	10.5	⅞	0.14	1 9000 0310 00
	16.0	⅝	13.5	⅞	0.14	1 9000 0311 00
	20.0	¾	17.2	⅞	0.15	1 9000 0312 00
	25.0	1	22.0	⅞	0.17	1 9000 0313 00
Hose nipple with lock nut	10.0	⅜	8.0	⅝	0.29	2 9000 0260 00
	12.5	½	10.5	⅞	0.29	2 9000 0261 00
	16.0	⅝	13.5	⅞	0.29	2 9000 0262 00
	20.0	¾	17.2	⅞	0.32	2 9000 0263 00
	25.0	1	22.0	⅞	0.32	2 9000 0264 00

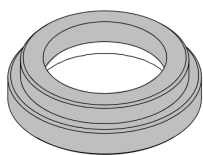
This page intentionally left blank

Connection	Connection thread	Bore		Weight kg <sup>1)</sup>	Part number
		mm	in		
External thread	G 3/8 A	11.3	7/16	0.11	<b>3</b> 9000 0300 00
	G 1/2 A	14.8	37/64	0.12	<b>3</b> 9000 0301 00
	G 3/4 A	19.0	3/4	0.13	<b>3</b> 9000 0302 00
	G1A	25.5	1	0.13	<b>3</b> 9000 0303 00
Internal thread Internal thread	G 3/8	15.0	19/32	0.12	<b>4</b> 9000 0304 00
	G 1/2	18.6	3/4	0.13	<b>4</b> 9000 0305 00
	G 3/4	24.2	1	0.14	<b>4</b> 9000 0306 00
Internal thread, with strainer	G 3/4	24.2	1	0.14	<b>5</b> 9000 0306 01
Internal thread	G1	30.3	1 3/16	0.15	<b>6</b> 9000 0307 00
Cover	-	-	-	0.18	<b>7</b> 9000 0314 00
Forged claw coupling	G1/2A (M-AUS)	14.8	37/64	0.12	<b>8</b> 9001000301
	G1A (M-AUS)	25.5	1	0.13	<b>8</b> 9001000303
	G1/2 (F-AUS)	18.6	3/4	0.13	<b>8</b> 9001000305
	G1 (F-AUS)	30.3	1 3/16	0.15	<b>8</b> 9001000307
Forged claw coupling 10.0 mm	(HN-AUS)	-	-	-	<b>9</b> 9001000310
Forged claw coupling 25.0 mm	(HN-AUS)	-	-	-	<b>10</b> 9001000313

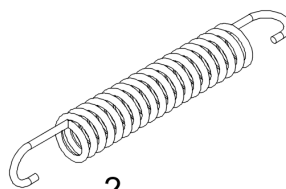
Refer to Parts Online for the most up to date information. The printed information might be outdated.

Fri Feb 04 02:08:34 UTC 2022

Item	Part No.	Name	Qty	L
1	9000030800	FORGED CLAW COUPLINGG 6.3MM(HN)	1	
1	9000030900	FORGED CLAW COUPLING 10.0MM(HN)	1	
1	9000031000	FORGED CLAW COUPLING 12.5MM(HN)	1	
1	9000031100	FORGED CLAW COUPLING 16.0MM(HN)	1	
1	9000031200	HoseNipple	1	
1	9000031300	FORGED CLAW COUPLING 25.0MM(HN)	1	
2	9000026000	FORGED CLAW COUPLING 10.0MM(HN-LN)	1	
2	9000026100	FORGED CLAW COUPLING 10.0MM(HN-LN)	1	
2	9000026200	FORGED CLAW COUPLING 16.0MM(HN-LN)	1	
2	9000026300	FORGED CLAW COUPLING 20.0MM(HN-LN)	1	
2	9000026400	FORGED CLAW COUPLING 25.0MM(HN-LN)	1	
3	9000030000	FORGED CLAW COUPLING G3/8A(M)	1	
3	9000030100	Forged claw coupling	1	
3	9000030200	Claw coupling	1	
3	9000030300	FORGED CLAW COUPLINGG1A(M)	1	
4	9000030400	FORGED CLAW COUPLINGG3/8(F)	1	
4	9000030500	FORGED CLAW COUPLING G1/2(F)	1	
4	9000030600	Forged coupling G3/4 (F)	1	
5	9000030601	FORGED CLAW COUPLING G3/4(F)+STRAINER	1	
6	9000030700	FORGED CLAW COUPLING G1(F)	1	
7	9000031400	FORGED CLAW COUPLING-COVER	1	
8	9001000301	FORGED CLAW COUPLING G1/2A(M-AUS)	1	
8	9001000303	FORGED CLAW COUPLING G1A(M-AUS)	1	
8	9001000305	FORGED CLAW COUPLING G1/2(F-AUS)	1	
8	9001000307	FORGED CLAW COUPLINGG1(F-AUS)	1	
9	9001000310	FORGED CLAW COUPLING10.0MM(HN-AUS)	1	
10	9001000313	FORGED CLAW COUPLING 25.0MM(HN-AUS)	1	

**Air Couplings & Fittings** Packings and lock springs for claw couplings (forged)

1



2

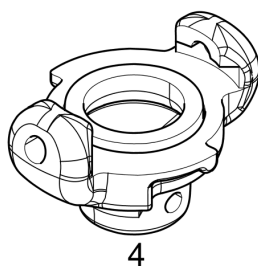
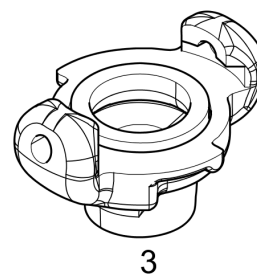
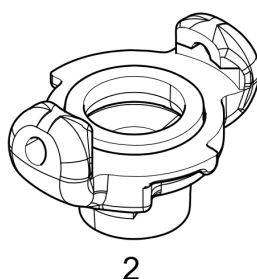
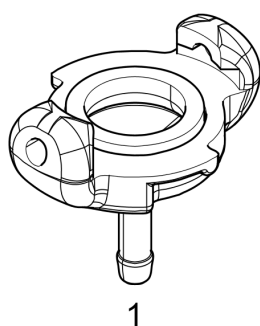
For tech. details check next page

This page intentionally left blank



Description	Fit to coupling	Comment	Part number
	<b>Part number 9000 ...</b>		
Packing	0300 00 to 0314 00	Can be replaced by special packing 9000 0000 01 <sup>1)</sup>	<b>1</b> 9000 0000 00
	0260 00 to 0262 00	-	<b>1</b> 9000 0015 00
	0263 00 and 0264 00	Can be replaced by special packing 900 00319 00 <sup>1)</sup>	<b>1</b> 9000 0268 00
Lock spring	Fits to all 9000 0300 00 to 9000 0314 00 couplings	-	<b>2</b> 3176 8640 00
Strainer	Fits to 9000 0306 01	-	<b>3</b> 9000 0000 10

Item	Part No.	Name	Qty	L
1	9000000000	Packing	1	
1	9000001500	Packing	1	
1	9000026800	Packing	1	
2	3176864000	Lock spring	1	
3	9000000010	Strainer	1	

**Air Couplings & Fittings** Claw couplings, US type (casted)

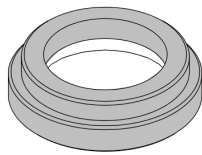
For tech. details check next page

This page intentionally left blank

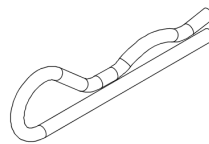
Connection	Hose inner diameter		Bore		Weight	Part number
	mm	in	mm	in		
Hose nipple	10.0	$\frac{3}{8}$	6	$\frac{5}{64}$	0.16	<b>1</b> 9001 0005 11
	12.5	$\frac{1}{2}$	9	$\frac{23}{64}$	0.18	<b>1</b> 9001 0005 10
	20.0	$\frac{3}{4}$	14	$\frac{9}{16}$	0.24	<b>1</b> 9001 0005 12
	25.0	1	20	$\frac{3}{4}$	0.29	<b>1</b> 9001 0005 13

Connection	Connection thread	Bore		Weight	Part number
		mm	in		
External thread	$\frac{3}{8}$ " NPT	9	$\frac{23}{64}$	0.18	<b>2</b> 9001 0005 00
	$\frac{1}{2}$ " NPT	12	$\frac{15}{32}$	0.19	<b>2</b> 9001 0005 01
	$\frac{3}{4}$ " NPT	17	$\frac{43}{64}$	0.22	<b>2</b> 9001 0005 02
	1" NPT	20	$\frac{3}{4}$	0.26	<b>2</b> 9001 0005 03
Internal thread	$\frac{3}{8}$ " NPT	15	$\frac{19}{32}$	0.18	<b>3</b> 9001 0005 08
	$\frac{1}{2}$ " NPT	18	$\frac{23}{32}$	0.18	<b>3</b> 9001 0005 05
	$\frac{3}{4}$ " NPT	20	$\frac{3}{4}$	0.20	<b>3</b> 9001 0005 06
	1" NPT	20	$\frac{3}{4}$	0.22	<b>3</b> 9001 0005 07
Cover	-	-	-	0.22	<b>4</b> 9001 0005 22

Item	Part No.	Name	Qty	L
1	9001000511	CASTED US CLAW COUPLING 3/8INCH (HN)	1	
1	9001000510	CASTED US CLAW COUPLING 1/2INCH (HN)	1	
1	9001000512	CASTED US CLAW COUPLING 3/4INCH (HN)	1	
1	9001000513	CASTED US CLAW COUPLING 1INCH (HN)	1	
2	9001000500	CASTED US CLAW COUPLING 3/8INCH NPT (M)	1	
2	9001000501	CASTED US CLAW COUPLING 1/2INCH NPT (M)	1	
2	9001000502	CASTED US CLAW COUPLING 3/4" NPT (M)	1	
2	9001000503	CASTED US CLAW COUPLING 1INCH NPT (M)	1	
3	9001000508	CASTED US CLAW COUPLING 3/8INCH NPT (F)	1	
3	9001000505	CASTED US CLAW COUPLING 1/2INCH NPT (F)	1	
3	9001000506	CASTED US CLAW COUPLING 3/4INCH NPT (F)	1	
3	9001000507	CASTED US CLAW COUPLING 1INCH NPT (F)	1	
4	9001000522	CASTED US CLAW COUPLING - COVER	1	

**Air Couplings & Fittings** Packings and lock springs for US claw couplings

1



2

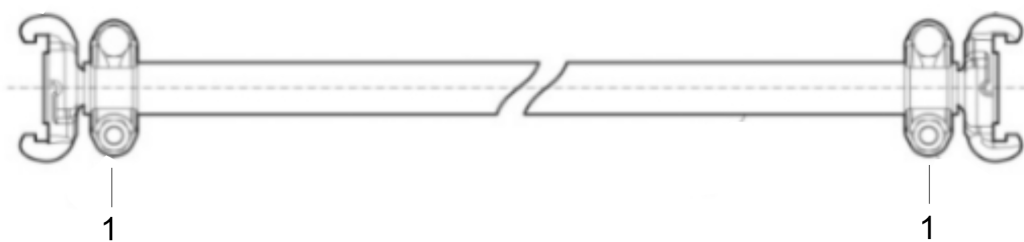
For tech. details check next page

This page intentionally left blank



Description	Fit to coupling	Part number
	Part number 9001 0005 ..	
Packing	00 to 22	1 9001 0005 15
Lock pin	00 to 22	2 9001 0005 23

Item	Part No.	Name	Qty	L
1	9001000515	Packing	1	
2	9001000523	Lock pin	1	

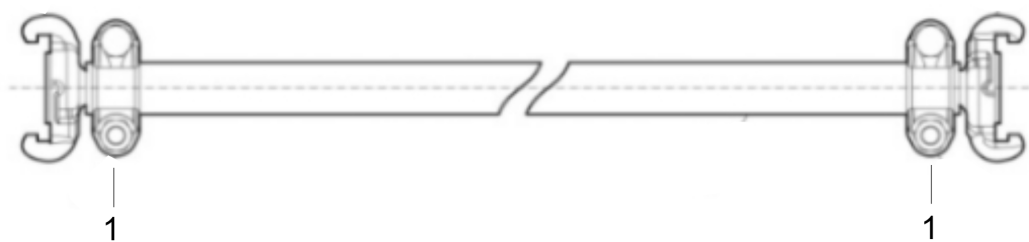
**Air Couplings & Fittings** Hose Clamps for US type forged Claw Couplings

For tech. details check next page

This page intentionally left blank

Description	Hose dimension, external diameter		Round rubber, hose dimension, internal diameter		Flat hose dimension, internal diameter		Part number
	mm	in	mm	in	mm	in	
Two piece hose clamp	22 – 29	$\frac{7}{8} - 1 \frac{1}{8}$	12.5	$\frac{1}{2}$	20	$\frac{3}{4}$	1 9000 0050 00
	29 – 32	$1 \frac{1}{8} - 1 \frac{3}{8}$	20	$\frac{3}{4}$	25	1	1 9000 0051 00

Item	Part No.	Name	Qty	L
1	9000005000	HOSE CLAMP 22 - 29 MM (CASTED CC)	2	
1	9000005100	HOSE CLAMP 29 - 32 MM (CASTED CC)	2	

**Air Couplings & Fittings** Hose clamps for Atlas Copco forged claw couplings

For tech. details check next page

This page intentionally left blank

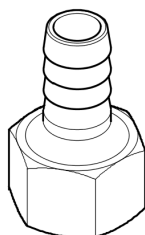


Description	Hose dimension, external diameter		Round rubber, hose dimension, internal diameter		Flat hose dimension, internal diameter		Part number
	mm	in	mm	in	mm	in	
Two-piece hose clamp	22 – 29	$\frac{7}{8} - 1$	12.5	$\frac{1}{2}$	20	$\frac{3}{4}$	1 9000 0194 00
	25 – 28	$1 - 1 \frac{1}{8}$	16	$\frac{5}{8}$	-	-	1 9000 0195 00
	29 – 32	$1 \frac{1}{8} - 1 \frac{1}{4}$	20	$\frac{3}{4}$	25	1	1 9000 0196 00
	34 – 38	$1 \frac{3}{8} - 1 \frac{1}{2}$	25	1	-	-	1 9000 0197 00
	43 – 47	$1 \frac{3}{4} - 1 \frac{7}{8}$	31.5	$1 \frac{1}{4}$	40	$1 \frac{1}{2}$	1 9000 0381 00
	54 – 58	$2 \frac{1}{8} - 2 \frac{1}{4}$	40	$1 \frac{1}{2}$	50	2	1 9000 0198 01
	66 – 70	$2 \frac{5}{8} - 2 \frac{3}{4}$	50	2	-	-	1 9000 0199 00
	78 – 82	$3 \frac{1}{8} - 3 \frac{1}{4}$	63	$2 \frac{1}{2}$	76	2	1 9000 0189 00

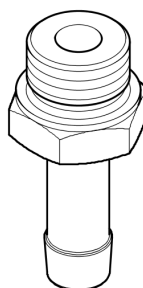
Item	Part No.	Name	Qty	L
1	9000019400	HOSE CLAMP 22 - 25 MM (FORGED CC)	2	
1	9000019500	HOSE CLAMP 25 - 29 MM (FORGED CC)	2	
1	9000019600	Hose clamp 29-32mm	2	
1	9000019700	HOSE CLAMP 34 - 38 MM (FORGED CC)	2	
1	9000038100	HOSE CLAMP 43 - 47 MM (FORGED CC)	2	
1	9000019801	HOSE CLAMP 54 - 58 MM (FORGED CC)	2	
1	9000019900	HOSE CLAMP 66 - 70 MM (FORGED CC)	2	
1	9000018900	HOSE CLAMP 78 - 82 MM (FORGED CC)	2	

**Air Couplings & Fittings** Hose nipples

1



2



3

For tech. details check next page

This page intentionally left blank

Description	Bore		Hose dimension, internal diameter		Part number
	mm	in	mm	in	
Hose jointing nipple	9	$2\frac{3}{64}$	10	$\frac{3}{8}$	<b>1</b> 9000 0215 00
	12	$1\frac{5}{32}$	12.5	$\frac{1}{2}$	<b>1</b> 9000 0216 00
	14	$\frac{9}{16}$	16	$\frac{5}{8}$	<b>1</b> 9000 0217 00
	17	$4\frac{3}{64}$	20	$\frac{3}{4}$	<b>1</b> 9000 0218 00
	22	$2\frac{9}{32}$	25	1	<b>1</b> 9000 0219 01
	35	$1\frac{3}{8}$	40	$1\frac{1}{2}$	<b>1</b> 9000 0220 00
	44.5	$1\frac{3}{4}$	50	2	<b>1</b> 9000 0221 00
Hose nipple for cup nut	10.5	$1\frac{3}{32}$	12.5	$\frac{1}{2}$	<b>2</b> 9000 0322 00
	8	$\frac{5}{16}$	12.5	$\frac{1}{2}$	<b>2</b> 9000 0323 01
	13.5	$1\frac{7}{32}$	16	$\frac{5}{8}$	<b>2</b> 9000 0324 00
	17.2	$1\frac{1}{16}$	20	$\frac{3}{4}$	<b>2</b> 9000 0325 00
	22	$\frac{7}{8}$	25	1	<b>2</b> 9000 0326 00
Hose nipple with particular coarse thread	10.5	$1\frac{3}{32}$	12.5	$\frac{1}{2}$	<b>3</b> 9000 0370 00
	17.2	$1\frac{1}{16}$	20	$\frac{3}{4}$	<b>3</b> 9000 0371 00
	20	$\frac{3}{4}$	25	1	<b>3</b> 9000 0372 00
	35	$1\frac{3}{8}$	40	$1\frac{1}{2}$	<b>3</b> 9000 0373 00
	45	$1\frac{3}{4}$	50	2	<b>3</b> 9000 0374 00
	64	$2\frac{1}{2}$	76	3	<b>3</b> 9001 0025 80

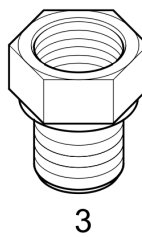
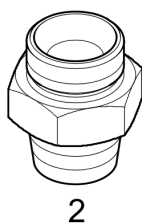
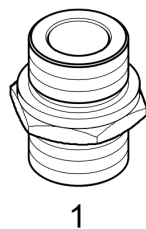
Refer to Parts Online for the most up to date information. The printed information might be outdated.

Fri Feb 04 02:08:36 UTC 2022

Item	Part No.	Name	Qty	L
1	9000021500	HOSE JOINTING NIPPLE 10.0 MM	1	
1	9000021600	HOSE JOINTING NIPPLE 12.5 MM	1	
1	9000021700	HOSE JOINTING NIPPLE 16.0 MM	1	
1	9000021800	HOSE JOINTING NIPPLE 20.0 MM	1	
1	9000021901	HOSE JOINTING NIPPLE 25.0 MM	1	
1	9000022000	HOSE JOINTING NIPPLE 40.0 MM	1	
1	9000022100	HOSE JOINTING NIPPLE 50.0 MM	1	
2	9000032200	HOSE NIPPLE (CUP NUT) 12.5 MM	1	
2	9000032301	HOSE NIPPLE (CUP NUT) 12.5 MM	1	
2	9000032400	HOSE NIPPLE (CUP NUT) 16.0 MM	1	
2	9000032500	HOSE NIPPLE (CUP NUT) 20.0 MM	1	
2	9000032600	HOSE NIPPLE (CUP NUT) 25.0 MM	1	
3	9000037000	HOSE NIPPLE (COARSE THREAD) 12.5 MM	1	
3	9000037100	HOSE NIPPLE (COARSE THREAD) 20.0 MM	1	
3	9000037200	HOSE NIPPLE (COARSE THREAD) 25.0 MM	1	
3	9000037300	HOSE NIPPLE (COARSE THREAD) 40.0 MM	1	
3	9000037400	HOSE NIPPLE (COARSE THREAD) 50.0 MM	1	
3	9001002580	HOSE NIPPLE (COARSE THREAD) 76.0 MM	1	

Refer to Parts Online for the most up to date information. The printed information might be outdated.

Fri Feb 04 02:08:36 UTC 2022

**Air Couplings & Fittings** Connecting nipples

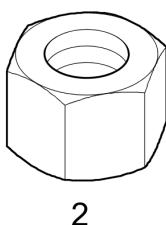
For tech. details check next page

This page intentionally left blank



Description	Thread		Part number
	A	B	
External	G ¾ A	G ¾ A	1 9000 0343 00
External	G ⅞ A	G 1A	1 9000 0345 00
External	Rd 38 - 8	G ½ A	2 9000 0028 00
External	Rd 38 - 8	G ¾ A	2 9000 0029 00
External	Rd 38 - 8	G 1A	2 9000 0030 00
External	Rd 65 - 6	G 1 ½ A	2 9000 0031 00
External	Rd 65 - 6	G 2 A	2 9000 0032 00
Internal	Rd 38 - 8	G ¾	3 9000 0034 00
Internal	Rd 38 - 8	G 1	3 9000 0035 00
Internal	Rd 65 - 6	G 1 ½	3 9000 0036 00
Internal	Rd 65 - 6	G 2	3 9000 0037 00

Item	Part No.	Name	Qty	L
1	9000034300	ADAPTER G3/4A - G3/4A (M)	1	
1	9000034500	Hexagon nipple	1	
2	9000002800	ADAPTER RD 38-8 - G1/2A (M)	1	
2	9000002900	ADAPTER RD 38-8 - G3/4A (M)	1	
2	9000003000	ADAPTER RD 38-8 - G1A (M)	1	
2	9000003100	ADAPTER RD 65-6 - G1 1/2A (M)	1	
2	9000003200	ADAPTER RD 65-6 - G2A (M)	1	
3	9000003400	ADAPTER RD 38-8 - G3/4 (F)	1	
3	9000003500	ADAPTER RD 38-8 - G1 (F)	1	
3	9000003600	ADAPTER RD 65-6 - G1 1/2 (F)	1	
3	9000003700	ADAPTER RD 65-6 - G2 (F)	1	

**Air Couplings & Fittings** Cup nuts

For tech. details check next page

This page intentionally left blank

Description	Thread	Part number
	mm	
Wing nut	G ¾	<b>1</b> 9000 0337 00
Wing nut	G ⅞	<b>1</b> 9000 0338 00
Wing nut	G 1 ⅛	<b>1</b> 9000 0339 00
Internal	G ⅝	<b>2</b> 9000 0331 00
Internal	G ¾	<b>2</b> 9000 0332 00
Internal	G ⅞	<b>2</b> 9000 0333 00

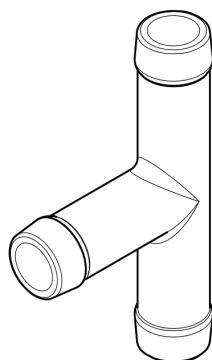
Description	Thread	Part number
	mm	
Wing nut	Rd 38 - 8	<b>3</b> 9000 0154 00
Wing nut	Rd 65 - 6	<b>3</b> 9000 0159 00

Refer to Parts Online for the most up to date information. The printed information might be outdated.

Fri Feb 04 02:08:37 UTC 2022

Item	Part No.	Name	Qty	L
1	9000033700	CUP NUT - WING G3/4	1	
1	9000033800	CUP NUT - WING G7/8	1	
1	9000033900	CUP NUT - WING G1 1/8	1	
2	9000033100	CUP NUT - HEXAGON G5/8	1	
2	9000033200	CUP NUT - HEXAGON G3/4	1	
2	9000033300	Cap nut	1	
3	9000015400	CUP NUT - WING RD 38-8	1	
3	9000015900	CUP NUT - WING RD 65-6	1	

## Air Couplings & Fittings Branch pipes



1

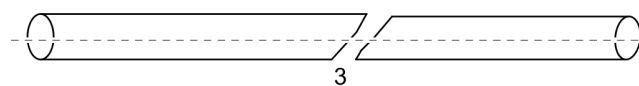
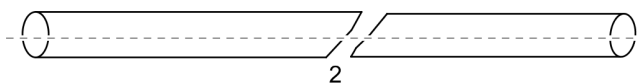
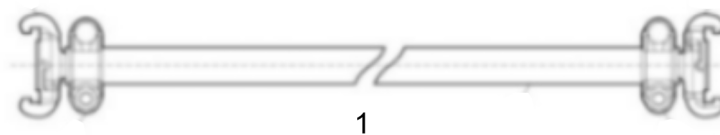
For tech. details check next page

This page intentionally left blank



Connection		Max. working pressure		Bore		Part number
mm	in	bar	psi	mm	in	
20 x 20 x 12.5	$\frac{3}{4} \times \frac{3}{4} \times \frac{1}{2}$	13	188	17 x 17 x 12	$1\frac{1}{16} \times 1\frac{1}{16} \times \frac{1}{2}$	<b>1</b> 9000 0440 00
25 x 25 x 12.5	$1 \times 1 \times \frac{1}{2}$	13	188	23 x 23 x 12	$2\frac{9}{32} \times 2\frac{9}{32} \times \frac{1}{2}$	<b>1</b> 9000 0441 00

Item	Part No.	Name	Qty	L
1	9000044000	BRANCH PIPE 3/4X3/4X1/2	1	
1	9000044100	BRANCH PIPE 1X1X1/2	1	

**X-Lite** X-Lite rolls hose

Bub number	Part number	inner diameter		Thickness		Max. working pressure		Length		Weight	
		mm	in	mm	in	bar	Psi	m	ft	kg	lb
1	9030 2114 00	20	3/4	2.0	5/64	20	290	60	195	11	24
1	9030 2114 01	20	3/4	2.5	5/64	20	290	100	325	18	40
1	9030 2114 02	20	3/4	2.5	5/64	20	290	200	650	36	79
1	9030 2106 00	25	1	2.5	5/64	20	290	60	195	15	33
1	9030 2106 01	25	1	2.5	5/64	20	290	100	325	25	55
1	9030 2106 02	25	1	2.5	5/64	20	290	200	650	50	110
1	9030 2107 00	40	1 1/2	2.5	5/64	14	200	60	195	27	60
1	9030 2108 00	50	2	2.8	7/64	14	200	60	195	33	72
2	9030 2108 02	50	2	-	-	14	200	200	650	110	243
3	9030 2109 00	76	3	3.0	1/8	10	145	40	130	38	84

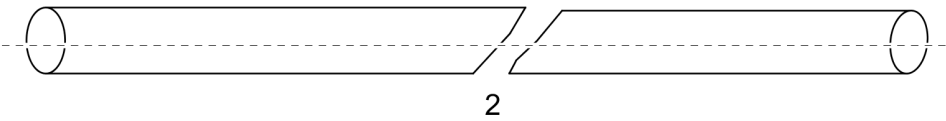
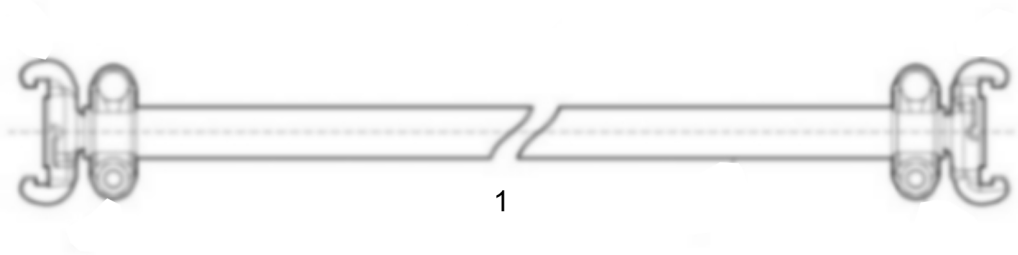
For tech. details check next page

This page intentionally left blank

Description	Inner diameter		Thickness		Max. working pressure		Length of roll		Weight	Content	Part number
	mm	in	mm	in	bar	psi	m	ft	kg <sup>1)</sup>		
Lightweight hose	20	¾	2.0	5/64	20	290	60	195	11	1	9030 2114 00
	20	¾	2.5	5/64	20	290	100	325	18		9030 2114 01
	20	¾	2.5	5/64	20	290	200	650	36		9030 2114 02
	25	1	2.5	5/64	20	290	60	195	15		9030 2106 00
	25	1	2.5	5/64	20	290	100	325	25		9030 2106 01
	25	1	2.5	5/64	20	290	200	650	50		9030 2106 02
	40	1 ½	2.5	5/64	14	200	60	195	27		9030 2107 00
	50	2	2.8	7/64	14	200	60	195	33		9030 2108 00
Hose X-Lite	50	2	-	-	14	200	200	650	110	2	9030 2108 02
Lightweight hose	76	3	3.0	1/8	10	145	40	130	38	3	9030 2109 00

Item	Part No.	Name	Qty	L
1	9030211400	X-LITE flat hose ø20 mm (60m)	1	
1	9030211401	X-LITE flat hose ø 20 mm (100m)	1	
1	9030211402	X-LITE flat hose ø 20 mm (200m)	1	
1	9030210600	X-LITE flat hose ø 25 mm (60m)	1	
1	9030210601	X-LITE flat hose ø 25 mm (100m)	1	
1	9030210602	X-LITE flat hose ø 25 mm (200m)	1	
1	9030210700	X-LITE flat hose ø 40 mm (60m)	1	
1	9030210800	X-LITE flat hose ø 50 mm (60m)	1	
2	9030210802	X-LITE flat hose ø 50 mm (200m)	1	
3	9030210900	X-LITE flat hose ø 76 mm (40m)	1	

**X-Lite** X-Lite Pre-mounted hoses



Bub number	Part number	inner diameter		Thickness		Max. working pressure		Length		Weight	
		mm	in	mm	in	bar	Psi	m	ft	kg	lb
1	9030 2115 00	20	3/4	2.0	5/64	20	290	20	65	4.5	10
1	9030 2115 15	20	3/4	2.0	5/64	20	290	15	49	3.5	8
1	9030 2163 00	20	3/4	2.0	5/64	20	290	3	10	1	2
2	9030 2111 00	25	1	2.0	5/64	20	290	20	65	6	13

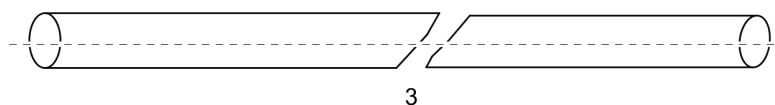
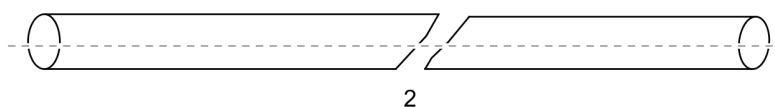
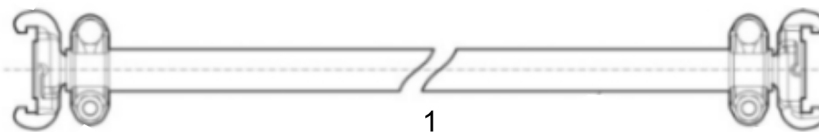
For tech. details check next page

This page intentionally left blank



Description	Inner diameter		Thickness		Max. working pressure		Length of roll		Weight	Content	Part number
	mm	in	mm	in	bar	psi	m	ft	kg <sup>1)</sup>		
Universal	20	¾	2.0	5/64	20	290	20	65	4.5	-	1 9030 2115 00
Universal	20	¾	2.0	5/64	20	290	15	49	3.5		1 9030 2115 15
RH 571, 572E, 658	20	¾	2.0	5/64	20	290	3	10	1		1 9030 2163 00
Universal	25	1	2.0	5/64	20	290	20	65	6		2 9030 2111 00

Item	Part No.	Name	Qty	L
1	9030211500	X-LITE flat hose ø 20 mm (PM)	1	
1	9030211515	X-LITE flat hose ø 20 mm (PM)	1	
1	9030211100	X-LITE flat hose ø 25 mm (PM)	1	
2	9030216300	X-LITE flat hose RH 571/572E/658 (PM)	1	

**H-Lite** H-Lite hoses

Bub number	Part number	Inner diameter		Max. working pressure		Length		Weight		Working temperature	
		mm	In	bar	Psi	m	ft	kg	lb	°C	°F
1	9030 2078 35	50	2	40	580	20	65	17	37	-30 to +100	-20 to +210
1	9030 2079 35	50	2	40	580	40	130	32	71	30 to +100	-20 to +211
1	3310 1016 53	20	3/4	20	290	30	98	7	15	-30 to +100	-20 to +212
1	3310 1016 54	20	3/4	20	290	60	196	13	29	-30 to +101	-20 to +213
1	3310 1016 55	25	1	20	290	30	98	7	15	-30 to +102	-20 to +214
1	3310 1016 56	25	1	20	290	60	196	13	29	-30 to +103	-20 to +215
2	3310 1016 57	20	3/4	20	290	30	98	7	15	-30 to +104	-20 to +216
2	3310 1016 58	20	3/4	20	290	60	196	13	29	-30 to +105	-20 to +217
2	3310 1016 59	25	1	20	290	30	98	7	15	-30 to +106	-20 to +218
2	3310 1016 60	25	1	20	290	60	196	13	29	-30 to +107	-20 to +219
3	3310 1016 61	50	2	40	580	30	98	24	52	-30 to +108	-20 to +220

For tech. details check next page

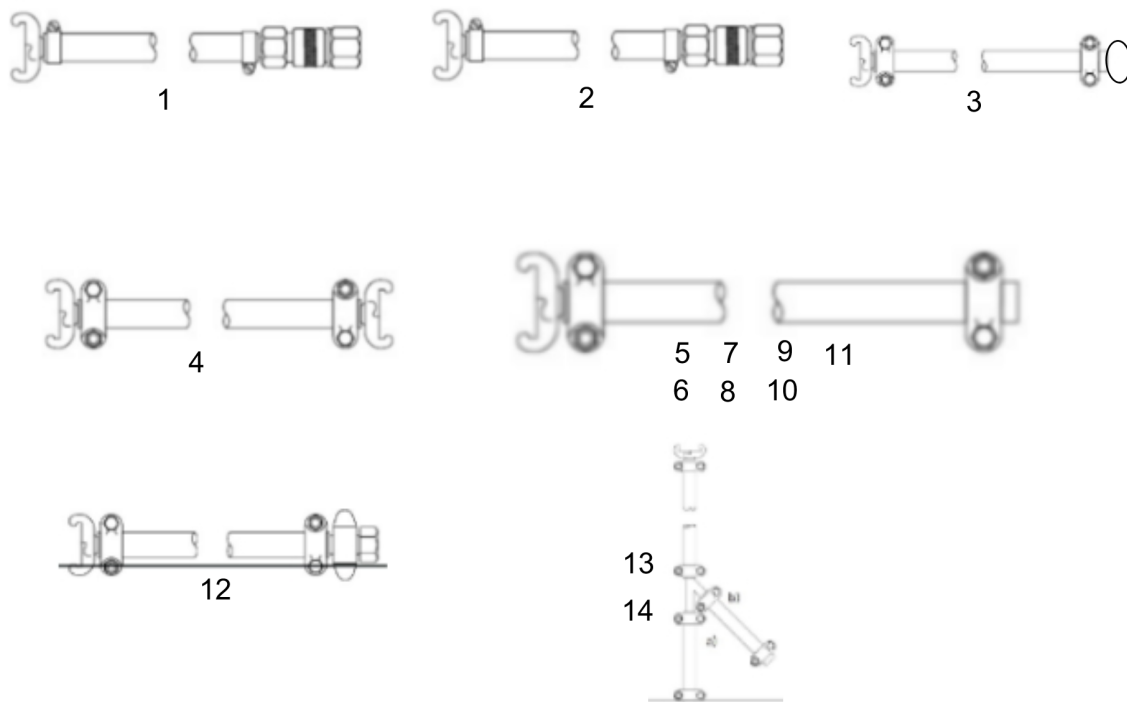
This page intentionally left blank

Description	Inner diameter		Max. working pressure		Length of roll		Weight	Working temperature		Part number
	mm	in	bar	psi	m	ft	kg <sup>1)</sup>	°C	°F	
H-Lite hose-W coupling	50	2	40	580	20	65	17	- 30 to + 100	- 20 to + 210	1 9030 2078 35
	50	2	40	580	40	130	32	- 30 to + 100	- 20 to + 210	1 9030 2079 35
	20	¾	20	290	30	98	7	- 30 to + 100	- 20 to + 210	1 3310 1016 53
	20	¾	20	290	60	196	13	- 30 to + 100	- 20 to + 210	1 3310 1016 54
	25	1	20	290	30	98	7	- 30 to + 100	- 20 to + 210	1 3310 1016 55
	25	1	20	290	60	196	13	- 30 to + 100	- 20 to + 210	1 3310 1016 56
H-Lite hose-W/O Coupling	20	¾	20	290	30	98	7	- 30 to + 100	- 20 to + 210	2 3310 1016 57
	20	¾	20	290	60	196	13	- 30 to + 100	- 20 to + 210	2 3310 1016 58
	25	1	20	290	30	98	7	- 30 to + 100	- 20 to + 210	2 3310 1016 59
	25	1	20	290	60	196	13	- 30 to + 100	- 20 to + 210	2 3310 1016 60
H-Lite hose	50	2	40	580	30	98	24	- 30 to + 100	- 20 to + 210	3 3310 1016 61

Refer to Parts Online for the most up to date information. The printed information might be outdated.

Fri Feb 04 02:08:40 UTC 2022

Item	Part No.	Name	Qty	L
1	9030207835	H-LITE HOSE Ø50MM L20M 40BAR W COUPLING	1	
1	9030207935	H-LITE HOSE Ø50MM L40M 40BAR W COUPLING	1	
1	3310101653	H-LITE HOSE Ø20MM L30M 20BAR W COUPLING	1	
1	3310101654	H-LITE HOSE Ø20MM L60M 20BAR WO COUPLING	1	
1	3310101655	H-LITE HOSE Ø25MM L30M 20BAR W COUPLING	1	
1	3310101656	H-LITE HOSE Ø25MM L60M 20BAR W COUPLING	1	
2	3310101657	H-LITE HOSE Ø20MM L30M 20BAR WO COUPLING	1	
2	3310101658	H-LITE HOSE Ø20MM L60M 20BAR WO COUPLING	1	
2	3310101659	H-LITE HOSE Ø25MM L30M 20BAR WO COUPLING	1	
2	3310101660	H-LITE HOSE Ø25MM L60M 20BAR WO COUPLING	1	
3	3310101661	H-LITE HOSE Ø50MM L30M 40BAR W COUPLING	1	

**Rubber Hoses** Rubber pre-mounted hoses fitted with couplings and hose clamps

Bub number	Part number	inner diameter		Outer diameter		Max. working pressure		Length		Weight	
		mm	in	mm	in	bar	Psi	m	ft	kg	lb
1	9030 2042 00	10	3/8	17	1 1/16	16	232	3	10	0.9	2
2	9030 2043 00	12.5	1/2	22	5/8	16	232	3	10	1.2	3
3	9030 2090 00	12.5	1/2	22	5/8	16	232	3	10	1.5	3
4	9030 2044 00	12.5	1/2	22	5/8	16	232	3	10	1.2	3
4	9030 2045 00	12.5	1/2	22	5/8	16	232	15	49	5.9	13
4	9030 2049 00	20	3/4	30	1 3/16	16	232	15	49	7.6	17
4	9030 2050 00	25	1	36	1 5/16	16	232	15	49	12.0	26
5	9030 2066 00	12.5	1/2	22	5/8	16	232	3	10	1.5	3
5	9030 2100 00	20	3/4	22	5/8	16	232	3	10	2.0	4
6	9030 2064 00	12.5	1/2	22	5/8	16	232	3	10	1.5	3
7	9030 2046 00	15	5/8	25	1	16	232	3	10	1.7	4
8	9030 2047 00	20	3/4	30	1 3/16	16	232	3	10	2.1	5
9	9030 2065 00	20	3/4	30	1 3/16	16	232	3	10	2.1	5
10	9030 2051 00	25	1	36	1 5/16	16	232	3	10	2.5	6
11	9030 2069 00	12.5	1/2	22	5/8	16	232	0.6	2 1/2	0.4	1
12	9030 2048 00	20	3/4	30	1 3/16	16	232	3	10	2.0	4
13	9030 2067 00	20	3/4	30	1 3/16	13	188	3.6	12	3.5	8
14	9030 2068 00	25	1	36	1 5/16	13	188	3.6	12	4.4	9

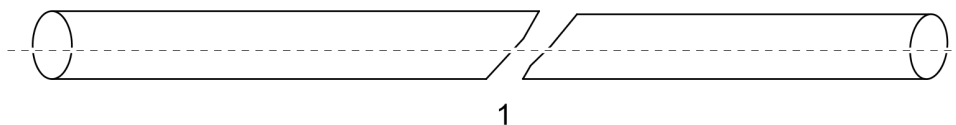
For tech. details check next page

This page intentionally left blank



Description	Inner diameter		Outer diameter		Max. working pressure		Length of roll		Weight	Part number
	mm	in	mm	in	bar	psi	m	ft	kg <sup>1)</sup>	
DKR 36	10	3/8	17	1 1/16	16	232	3	10	0.9	1 9030 2042 00
TEX 3, 05	12.5	1/2	22	5/8	16	232	3	10	1.2	2 9030 2043 00
	12.5	1/2	22	5/8	16	232	3	10	1.5	3 9030 2090 00
TEX 09, 10, 11, 12	12.5	1/2	22	5/8	16	232	3	10	1.2	4 9030 2044 00
Universale	12.5	1/2	22	5/8	16	232	15	49	5.9	4 9030 2045 00
	20	3/4	30	1 3/16	16	232	15	49	7.6	4 9030 2049 00
	25	1	36	1 5/16	16	232	15	49	12	4 9030 2050 00
BBD 12 D/DS	12.5	1/2	22	5/8	16	232	3	10	1.5	5 9030 2066 00
	20	3/4	22	5/8	16	232	3	10	2	5 9030 2100 00
With US claw coupling	12.5	1/2	22	5/8	16	232	3	10	1.5	6 9030 2064 00
BBD 15ET	15	5/8	25	1	16	232	3	10	1.7	7 9030 2046 00
RH 571, 572E, 656W, 658, . BBD 12T, 12TS, 15E	20	3/4	30	1 3/16	16	232	3	10	2.1	8 9030 2047 00
With US claw coupling	20	3/4	30	1 3/16	16	232	3	10	2.1	9 9030 2065 00
BBC 16W, BBC 34, . BBD 46, 94 DSI	25	1	36	1 5/16	16	232	3	10	2.5	10 9030 2051 00
Water /air flushing hose . for BBC, BBD, RH	12.5	1/2	22	5/8	16	232	0.6	2 1/2	0.4	11 9030 2069 00
TEX 14PS - TEX 40PE	20	3/4	30	1 3/16	16	232	3	10	2.0	12 9030 2048 00
RH 656W for pusher leg	20	3/4	30	1 3/16	13	188	3.6	12	3.5	13 9030 2067 00
BBD 94W for pusher leg	25	1	36	1 5/16	13	188	3.6	12	4.4	14 9030 2068 00

Item	Part No.	Name	Qty	L
1	9030204200	Rubber hose DKR 36 (PM)	1	
2	9030204300	Rubber hose TEX 3/05 (PM)	1	
3	9030204400	Rubber hose Tex 09-12 (PM)	1	
4	9030204500	RubberHose 1/2",25M	1	
4	9030204900	RubberHose3/4",25M	1	
4	9030205000	Rubber hose ø 25 mm (PM)	1	
4	9030209000	1/2" , 3M Rubber hose	1	
5	9030206600	Rubber hose BBD 12D/DS (PM)	1	
5	9030210000	3/4" , 3M Rubber hose	1	
6	9030206400	Rubber hose BBD 12D/DS (PM-US)	1	
7	9030204600	Rubber hose BBD 15ET (PM)	1	
8	9030204700	Rubber hose RH/BBD (PM)	1	
9	9030206500	Rubber hose RH/BBD (PM-US)	1	
10	9030205100	Rubber hose BBC 16W/34 BBD 46/94DSI (PM)	1	
11	9030206900	Water flushing hose BBC/BBD/RH (PM)	1	
12	9030204800	Rubber hose TEX 14PS - 40PE (PM)	1	
13	9030206700	Rubber hose RH 656W PL (PM)	1	
14	9030206800	Rubber hose BBD 94W PL (PM)	1	

**Rubber Hoses** Hose rolls

Bub number	Part number	inner diameter		Outer diameter		Max. working pressure		Length		Weight	
		mm	in	mm	in	bar	Psi	m	ft	kg	lb
1	9030 2037 00	10	2/4	17	1 1/16	16	232	30	98	6.9	15
1	9030 2038 00	12.5	2/4	22	5/8	16	232	30	98	12.3	27
1	9030 2039 00	16	3/4	25	1	16	232	30	98	13.9	31
1	9030 2040 00	20	3/4	30	1 3/16	16	232	30	98	19.3	43
1	9030 2040 03	20	3/4	30	1 3/16	16	232	20	65	12.9	28
1	9030 2041 00	25	1	36	1 5/16	16	232	30	98	24.0	53
1	9030 2041 03	25	1	36	1 5/16	16	232	20	65	16.0	35

For tech. details check next page

This page intentionally left blank

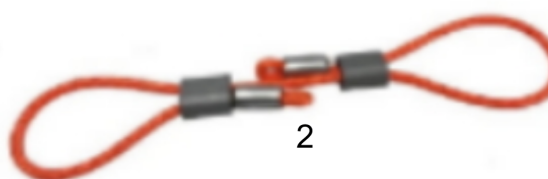
Description	Inner diameter		Outer diameter		Max. working pressure		Length roll		Weight	Part number
	mm	in	mm	in	bar	psi	m	ft	kg <sup>1)</sup>	
Rubber hose	10	$\frac{3}{8}$	17	$1\frac{1}{16}$	16	232	30	98	6.9	1 9030 2037 00
	12.5	$\frac{1}{2}$	22	$\frac{5}{8}$	16	232	30	98	12.3	1 9030 2038 00
	16	$\frac{5}{8}$	25	1	16	232	30	98	13.9	1 9030 2039 00
	20	$\frac{3}{4}$	30	$1\frac{3}{16}$	16	232	30	98	19.3	1 9030 2040 00
	20	$\frac{3}{4}$	30	$1\frac{3}{16}$	16	232	20	65	12.9	1 9030 2040 03
	25	1	36	$1\frac{5}{16}$	16	232	30	98	24.0	1 9030 2041 00
	25	1	36	$1\frac{5}{16}$	16	232	20	65	16.0	1 9030 2041 03

Refer to Parts Online for the most up to date information. The printed information might be outdated.

Fri Feb 04 02:08:41 UTC 2022

Item	Part No.	Name	Qty	L
1	9030203700	Rubber hose ø 10.0 mm (30m)	1	
1	9030203800	Rubber hose ø 12.5 mm (30m)	1	
1	9030203900	Rubber hose ø 16.0 mm (30m)	1	
1	9030204000	Rubber hose D20.0 mm (30m)	1	
1	9030204003	Rubber hose ø 20.0 mm (20m)	1	
1	9030204100	Rubber hose ø 25.0 mm (30m)	1	
1	9030204103	Rubber hose ø 25.0 mm (20m)	1	

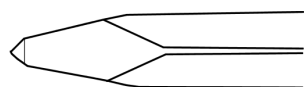
**Accessories** Whip Check



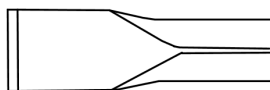
Item	Part No.	Name	Qty	L
1	3310101858	WhipChecks	1	
1	3310101859	Whip Check 1.1/2"-3",L=965mm,BS=2350kg	1	
1	3310101860	Whip Check 3"-6",L=1150mm,BS=2350kg	1	
2	3310102546	Whip check Pro 1/2 -4",L=500mm,BS=1000kg	1	



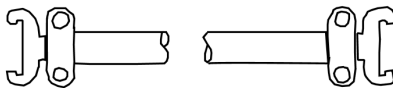
**Kits** Accessories kit



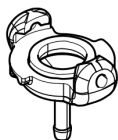
10



20



30



40



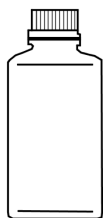
50



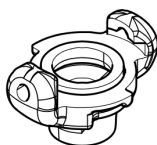
60



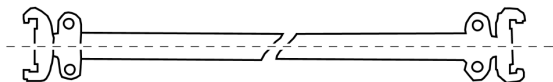
70



80

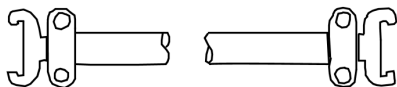


90



100

100



110

Item	Part No.	Name	Qty	L
10	3083320500	MoilPoint	2	
20	3083320800	NarrowChisel	2	
30	9030204900	RubberHose3/4",25M	1	
40	9000031200	HoseNipple	4	
50	8202510239	Lubricator	1	
60	8092011058	WaterSeparator	1	
70	3310101858	WhipChecks	5	
80	8099020236	BreakerHammeroil - 1 L	1	
90	9000030600	Forged coupling G3/4 (F)	1	
100	9000019600	Hose clamp 29-32mm	4	
110	9030210000	3/4" , 3M Rubber hose	1	